

Cornelius Cardew

The Great Learning

Paragraphs 1 and 2 revised version of 8 72

Organ (also plays Chinese bell)
Chorus (also playing stones and whistles)
4 drummers
4 instrumentalists
4 banners

Performance layout:

Banners

Group I
1 drummer
1 instrumentalist
Female chorus group

Group III
1 drummer
1 instrumentalist
Mixed chorus group

Group II
1 drummer
1 instrumentalist
Mixed chorus group

Group IV
1 drummer
1 instrumentalist
Male chorus group

Organ: wherever it happens to be.
Conductor (steps up as needed): wherever convenient.

Performance notes. p 24

Programme note. p 25

BRITISH MUSIC INFORMATION CENTRE.

10, Stratford Place, LONDON, W.1

The Great Learning paragraphs 1 & 2 revised version

8.72

Stones Chorus

Very slow

Stones

3/4

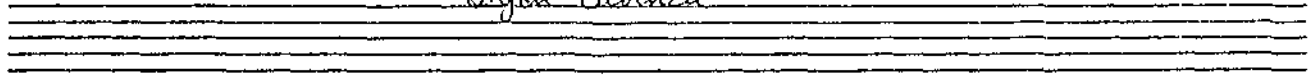
Organ

Swell

b) c) p possibile

* a) b) c) etc. see Performance notes p 24

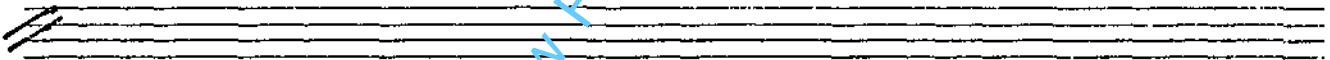
Organ Cadenza



SW

gt

ped



SW

Chinese bell

G# if available

Handwritten musical score for the first system. It consists of a piano staff (treble and bass clefs) and a bass staff (bass clef). The piano staff has a treble clef and a key signature of one sharp (F#). The bass staff has a bass clef and a key signature of one flat (Bb). The score includes various notes, rests, and articulation marks. A handwritten annotation 'SW' with a double-headed arrow points to a note in the piano staff. Another annotation 'Chinese bell' with a bracket points to a note in the piano staff. A third annotation 'G# if available' with a bracket points to a note in the piano staff. The bass staff has a '4' written above it.

Handwritten musical score for the second system. It consists of a piano staff (treble and bass clefs) and a bass staff (bass clef). The piano staff has a treble clef and a key signature of one sharp (F#). The bass staff has a bass clef and a key signature of one flat (Bb). The score includes various notes, rests, and articulation marks.

Handwritten musical score for the third system. It consists of a piano staff (treble and bass clefs) and a bass staff (bass clef). The piano staff has a treble clef and a key signature of one sharp (F#). The bass staff has a bass clef and a key signature of one flat (Bb). The score includes various notes, rests, and articulation marks.

Preview File Only

Handwritten musical notation for the first system, showing a treble and bass clef with notes and a slur.

Handwritten musical notation for the second system, including performance instructions: "< with each note" and "same order of notes on both manuals, & synchronise the takeovers".

Empty musical staff.

Empty musical staff.

Handwritten musical notation for the third system, including performance instructions: "tremulant" and "them off".

Handwritten musical notation for the fourth system, including performance instructions: "short as poss." and "them off".

Empty musical staff.

Empty musical staff.

Preview File Only