

Preview File Only

Jo-Ha-Kyû

*for
ensemble and tape*

*Mike Vaughan
(1986 rev. 1991)*

Performance Notes

1. Quartertones

♯	quartertone sharp
♯	threequartertone sharp
♭	quartertone flat

2. Trills

All trills are to be played as fast as possible.

Trills marked **tr.** are to the next semitone higher unless otherwise marked.

Trills marked **ktr.** are 'key' trills or timbral trills using any convenient fingering to produce the necessary articulation.

3. Grace Notes

All grace notes are to be played very quickly.

4. Vibrato

s.v. senza vibrato

m.v. molto vibrato

Program Note

Jo-ha-kyū was originally composed in 1985 for Roger Marsh and the Keele New Music Ensemble for performance at the 19th Annual Conference of Music Research Students held at Keele the same year.

The title is a reference to certain temporal processes in Japanese music and theatre which I studied at this time as preparation for the composition of a series of works for a Japanese flute, the *shakuhachi*. The current version was revised in 1991 for the then current instrumentation of the Keele New Music Ensemble.

The work is based on a single melodic line originally written for the *shakuhachi*. Elements of this melody are refracted around the ensemble creating a series of multiple images and distortions of the original material. The ideas arising from this method of working are defined in the first section, fused together in the central section and dispersed in the final section. This method of definition, development and 'rushing' to a conclusion is contained within the traditional concept of *Jo-ha-kyū*.

duration approx. 10'30"

Preview File Only

(A) $\text{♩} = 60$

Picc. (gloss.) *sfz* \rightarrow *f*

Flute *sfz* \rightarrow *f*

Clarinet *pp* \rightarrow *f* (gloss.)

Horn

Bar. Cl.

Cl. (3)

WOODBLOCK *f*

BONGO (SEE NOTE) *f*

Flute *sfz* \rightarrow *f*

Clarinet *pp* \rightarrow *f*

Horn *p* \rightarrow *f* \rightarrow *sfz*

Bar. Cl. *p*

Cl. (3) *p*

Per. #1 *f*

Per. #2 *f*

Preview File Only

8 $\text{♩} = 56$

Flute (8) *tr.* *sffz* *sfmp* *sfz* *mp*

Oboe *mp* *pp*

Ob. Clar. *mp*

Horn *mf* *pp*

Bassoon Clar. *sffz* *mp*

Clarinet *sffz* *pp*

Trumpet #1 *f*

Trumpet #2 *mf* *tranco* *f* *rit.*

11

Flute *sffz* *sf* *f* *poco meno mosso*

Oboe *mp* *mf* *f*

Ob. Clar. *sffz* *f*

Horn *sfp* *mf* *p* *f* *sfp*

Bassoon Clar. *f*

Clarinet *Pizz.* *mp* *f*

Trumpet #1 *f*

Trumpet #2 *f*

Preview File Only

Flute 11/8

Flute 2 11/8

Ob Clarinet 11/8

Horn 11/8

Bass Clarinet 11/8

Ch. (l.v.) 11/8

Re. #1 11/8

Re. #2 11/8

Flute 3/4

Flute 2 3/4

Ob Clarinet 3/4

Horn 3/4

Bass Clarinet 3/4

Ch. (l.v.) 3/4

Re. #1 3/4

Re. #2 3/4

Preview File Only

19 *a tempo* *meno mosso* *a tempo* *poco meno mosso*

Flute *sfz.* *mf* *f* *f*

Oboe *sfz.* *mf* *f* *f*

Clarinet *sfz.* *f* *f*

Horn *sfz.* *mf* *p* *f*

Bassoon *sfz.* *f* *f*

Trumpet *p* *sfz.* *ff* *ff*

Trombone *f* *GONG* *(l.v.)* *mf*

Drum *CRYSTAL* *3:2* *DRUM* *f* *mp* *mf*

23 *a tempo*

Flute *mf* *sfz.* *sf* *sf* *sfz.*

Oboe *sfz.* *f*

Clarinet *f* *sfz.* *f*

Horn *sfz.*

Bassoon *p* *mf* *p* *f* *p* *f*

Trumpet *Prz. (l.v.)*

Trombone *f*

Drum *CRYSTAL* *(l.v.)* *p* *mf*

Preview File Only

Flute 1

sfpp sf sfz f mp

Oboe

mp

B♭ Clarinet

mp

Horn

mp

Trumpet

mp

Clarinet

f

Drum #1

CYMBAL mf f WOODBLOCK

Drum #2

CYMBAL mf f BONGO

poco meno mosso

Flute 1

f sfz

Oboe

f sfz

B♭ Clarinet

f sfz

Horn

sfz

Trumpet

f

Clarinet

p mf (ord.)

Drum #1

CYMBAL (Rev.) mf

Drum #2

f mf 3 TOMTOMS

Preview File Only

33 *meno mosso* *a tempo*

Flute *sfmp*

Oboe *p* *mf* *mf*

Clarinet in Bb *p* *mp* *pp* *mf*

Horn *sfmp* *pp* *mf* *sfmp*

Bass Clarinet *mp* *pp* *mf* *mf*

Clarinete *fizz.* *mf*

Acoustic Drums *WOODBLOCK*

Bongos *Tom-toms* *p* *mf* *p*

35

Flute *mf* *ff*

Oboe *mf* *ff*

Clarinet in Bb *mf* *ff*

Horn *mf* *ff*

Bass Clarinet *mf* *ff*

Clarinete *fizz.* *(aro)* *pp* *mf*

Acoustic Drums *BONGAL* *(c.r.)* *pp* *mf*

Bongos *Tom-tom* *CYMBAL* *BONGAL* *BONGO* *f* *mf* *f*

Flute 1: *sf* — *sf* — *f*

Oboe: *mf*

Clarinet in Bb: *mf*

Horn: *p* — *mf*

Bass Clarinet: *f* — *sfpp*

Clarinete: (B)

Per #1: *woodblock* *f*

Per #2: *BONGO*

Flute 1: *meno mosso* *a Tempo* *3ve* *sf* — *ff*

Oboe: *mf* — *ff*

Clarinet in Bb: *mf* — *ff*

Horn: *sf* — *sfz* — *pp*

Bass Clarinet: *mf* — *ff* — *mf* — *ff*

Clarinete: *pizz (legato)* *f* — *Acad* *sfz*

Per #1: *f*

Per #2: *BONGO* *BONGO*

Preview File Only

44 *meno mosso*

Flute *mp*

Oboe *p mp p mp mf*

Clarinet *p mp p mp mf*

Horn *p sfp*

Bass Clarinet *p sfp*

Clarinete *pp sfp pp*

Acorn #1

Acorn #2 *DAUMI*

TORTONS

47 *a tempo*

Flute *mf p mf p*

Oboe *mf p mf*

Clarinet *mf p mf*

Horn *p mf*

Bass Clarinet *p mf*

Clarinete *pp*

Acorn #1

Acorn #2 *BONGO*

TORTONS

Preview File Only

50

Flute 1 *p* *ff*

Flute 2 *mf* *ff*

Ob. Clar. *mf* *pp* *mp*

Horn *mf* *mp*

Bs. Clar. *p* *mp*

Cl. *p* *mf* *sfz-pp*

Per. #1 *f* *mp* *SYMBOL*

Per. #2 *mf* *f* *mp* *SYMBOLS* *BONGO*

53

Flute 1 *ff* *p* *a tempo*

Flute 2 *ff*

Ob. Clar. *ff* *p*

Horn *sfz* *ff*

Bs. Clar. *f* *p*

Cl. *f*

Per. #1 *f* *WOODBLOCK*

Per. #2 *f* *BONGO* *BONGO*

Preview File Only

56

Flute 1

p *f*

Flute 2

pp *mp* *pp* *f*

Oboe

pp *f*

Horn

pp *mp* *pp* *p* *f*

Bass Clarinet

p *f*

Clarinet

pp *mp* *pp* *f*

Per #1

pp *f*

CYMBAL

Per #2

pp *mp* *pp*

CYMBAL

59

To Picc.

Flute 1

f *f*

Flute 2

f *f*

Oboe

sfz *pp*

m.v. *s.v.*

Horn

f *f*

Clarinet

f *f*

Per #1

f *f*

Per #2

f *f*

Per #2

f *f*

Picc. 60 [START TAP - IN NO. 1] [FADE IN GRADUALLY BUT AUDIBLE AT START] (CONTINUOUS TEXTURE)

Flute (Fl.) staff with notes, dynamics (sfz, p), and hairpins.

Oboe (Ob.) staff with notes, dynamics (sfz, p), and hairpins.

Clarinet (Cl.) staff with notes, dynamics (sfz, p), and hairpins.

Horn (Horn) staff with notes, dynamics (p, sfz, p), and triplets.

Bass Clarinet (Bass Clar.) staff with notes, dynamics (sfz, p), and hairpins.

Clarinet in B (Cl. B) staff with notes, dynamics (p, f, p, f, p), and hairpins.

Trumpet #1 (Tr. #1) staff with notes, dynamics (p, f, p, f), and hairpins.

Trumpet #2 (Tr. #2) staff with notes, dynamics (f, p, mf, p), and hairpins.

64 a tempo

Flute (Fl.) staff with notes, dynamics (mp), and hairpins.

Oboe (Ob.) staff with notes, dynamics (mp), and hairpins.

Clarinet (Cl.) staff with notes, dynamics (p), and hairpins.

Horn (Horn) staff with notes, dynamics (p, sf, mf), and triplets.

Bass Clarinet (Bass Clar.) staff with notes, dynamics (p, mf, ff), and hairpins.

Clarinet in B (Cl. B) staff with notes, dynamics (p, mf, ff), and hairpins.

Trumpet #1 (Tr. #1) staff with notes, dynamics (f), and hairpins.

Trumpet #2 (Tr. #2) staff with notes, dynamics (f), and hairpins.

Preview File Only

67

Flute (8) *mp* *mf* *sf* *pp* *f* *mf*

[TIDE]

Oboe *mp*

Clarinet *p*

Horn *sf* *pp* *mf*

Baritone Clarinet *mf* *f* *mf*

Clarinets *mf* *f* *f* *mf*

Ar. #1 *p* *mf*

Ar. #2 *p* *f*

23

Flute (8) *mp* *mf* *f* *mf* *f* *mf*

Oboe *mp* *mf*

Clarinet *mp* *pp*

Horn *mp* *f* *mf* *f*

Baritone Clarinet *mf* *f* *f* *mf* *f*

Clarinets *f* *mf* *f* *mf*

Ar. #1 *f*

Ar. #2 *p* *mf* *p*

24

Preview File Only

74
(8)

Flute
Clar.
Horn
Bass Clar.
Clar.

TAPE. →

mf ff mf ff mf ff

mf ff mf ff

mf ff mf ff

f sfmf ff sfj ff

mf ff mf ff mf ff

mf ff mf

77
(8)

Flute
Clar.
Horn
Bass Clar.
Clar.

TAPE. →

sfz sfz p ff mf

ff mf ff sfj

ff p ff sfj

ff mf sfj sf.

ff p sfj sfz

ff p sfj sfz

75

Perc #1
Perc #2

SYMBOLS

MONOLOCK

GONG

GONG

f

f

76

Perc #1
Perc #2

SYMBOLS

GONG

p

f

flute

ff p sfz p

TAPE

ff p sfz p

[TAPE DEVELOPS INTO A GLISSANDO]

ob Clar

ff p sfz p

horn

sfz ff p sfz p

bars Clar

ff sfz p

cl

sfz ff sfz p

trp #1

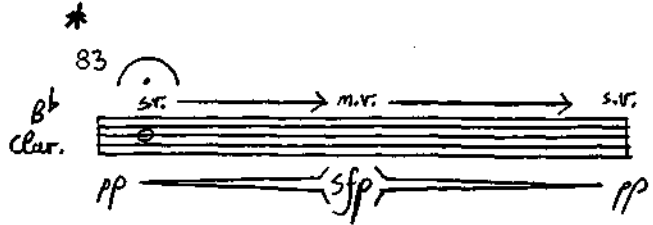
p ff

trp #2

p ff

Preview File Only

(C)



Tape →
[END OF GLISS.]

[ID2] →
START
(ISOLATED INHARMONIC SOUNDS IN
QUASI-COUNTERPOINT)

* A.B. START NOTE BEFORE THE END OF THE GLISSANDO. DURING THE NOTE ADVANCE TAPE TO ID2 AND BEGIN AS CLARINET DEGRAD. (THE FIRST TAPE SOUND HAS A SLOW ATTACK)

♩ = c.40-48

Preview File Only

93

Clarinet

Bassoon

(8)

Tape

6/4

101

Clarinet

Bassoon

(8)

3/2

96

Clarinet

Bassoon

(8)

3

104

Clarinet

Bassoon

(8)

3

Cresc.

99

Clarinet

Bassoon

(8)

APPROX. END OF
TAPE SEGMENT

[ID3 START]
(TAPE INTERLUDE)
c. 15"

N.B. SOSTAIN CLARINET NOTE UNTIL TAPE
HAS BEEN ADVANCED AND THE INTERLUDE HAS BEGUN.
SECTION D1 SHOULD BEGIN AS THE INTERLUDE ENDS.

109 (8) $\text{♩} = 48$ (Piuolo)

(END OF INTERLUDE) [TRP 104 START]

CYMBAL

CYMBAL

113 (8)

CYMBAL

GONG

116

TAPE

312

tr

p

sfz *f* *sfz*

f *p* *sfz*

m.v.

tr

sfz *f* *p*

tr

Bass clef.

f *sfz*

tr

f *sfz*

Drum #1

CYMBAL

BASS DRUM

pp

Drum #2

CYMBAL

mp

119

ff *pp* *ff*

tr

5

ff *pp* *ff*

5

ff *sfz* *pp* *mf* *sfz* *ff*

m.v.

tr

5

ff *mf* *sfz* *pp* *ff*

tr

5

ff *pp* *ff*

tr

5

ff *pp* *sfz* *ff*

Drum #1

CYMBALS

mf *mp* *mf*

Drum #2

GONG

CYMBAL

mf *mp*

24

Fl.
Ob.
Cl.
Bsn.
Tr.
Tbn.
Perc.
CYMBALS
TOM TOMS

35

128

Fl.
Ob.
Cl.
Bsn.
Tr.
Tbn.
Perc.
CYMBALS
TOM TOMS

36

132

TAPE →

Flute

Clarinet

Ob. Clar.

Horn

Bass Clar.

Cl.

Trp. #1

Trp. #2

37

136

Flute

Clarinet

Ob. Clar.

Horn

Bass Clar.

Cl.

Trp. #1

Trp. #2

38

140
(8)

Flute: p

Clarinet: p , mp , p , mp

Bassoon: mp

Bass Clarinet: p , $sfmp$, pp

Picc. (legato): mf

Bass Drum: mp

Cymbal: pp , mp

Tom-Toms: mp

Annotations: *Ta*, *m.v.*, *s.v.*, *m.v.*, *s.v.*

143
(9)

Flute: p

Clarinet: p , mp , mf , p , mf , sfp

Bassoon: mp , mf , mf , p

Bass Clarinet: mp , mf , mf , p

Bass Drum: pp , mp

Bassoon #2: pp , mp

Annotations: *Ta*, *m.v.*, *s.v.*, *m.v.*, *s.v.*, *Ta*

Handwritten musical score for page 146, featuring multiple staves with dynamic markings and performance instructions.

Staff 1: *p* → *sf* → *ff* → *p* → *ff*. Includes a **FADE OUT TAPE** instruction with an arrow pointing right.

Staff 2: *p* → *ff* → *p* → *ff*.

Staff 3: *pp* → *mp* → *mf* → *ff*. Includes a triplet of notes.

Staff 4: *sfz* → *mp* → *pp* → *mf* → *f* → *p* → *ff*. Includes a triplet of notes.

Staff 5: *sfz* → *mf* → *sfz* → *p* → *ff*. Includes a sextuplet of notes.

Staff 6: *p* → *mf*.

Staff 7: *mp* → *p*. Includes the word **SYMBOL**.

Staff 8: *mp* → *pp*. Includes a triplet of notes and the word **SYMBOL**.

Handwritten musical score for page 149, featuring multiple staves with dynamic markings and performance instructions.

Staff 1: *ff* → *p*. Includes the instruction **TO FLUTE** and a wavy line above the staff.

Staff 2: *ff* → *p*. Includes the instruction **ADVANCE TAPE** and **[START TAPE ID5]** with an arrow pointing up.

Staff 3: *ff* → *sfpp* → *sfpp* → *sfpp* → *sfpp*. Includes a wavy line above the staff.

Staff 4: *ff* → *sfz*.

Staff 5: *ff* → *sfz*.

Staff 6: *sfz-p*.

Staff 7: *f*.

Staff 8: *f* → *pp* → *mf*. Includes the word **GONG** above the staff.

Preview File Only

Flute 1 staff with musical notation.

TAPE →

Flute 2 staff with musical notation.

Clarinet staff with musical notation.

Horn staff with musical notation.

Trumpet staff with musical notation.

Drum staff with musical notation.

Handwritten notation for CYMBALS with dynamics: p , mf , pp , mp , pp . Includes a 3/2 time signature.

Handwritten notation for CYMBAL and GONG with dynamics: mp , pp .

Flute 1 staff with musical notation and dynamics: $ffz.$, mf , $ffz.$, mf , $ffz.$, mf . Includes a wavy line above the staff.

TAPE →

Flute 2 staff with musical notation and dynamics: $ffz.$, mf , $ffz.$, mf . Includes a wavy line above the staff.

Clarinet staff with musical notation and dynamics: $ffz.$, mf , $ffz.$. Includes a wavy line above the staff.

Horn staff with musical notation and dynamics: sfz , $ffz.$, p . Includes a wavy line above the staff.

Trumpet staff with musical notation and dynamics: $ffz.$, mf , $ffz.$, mf , $ffz.$. Includes a wavy line above the staff.

Drum staff with musical notation and dynamics: f .

Handwritten notation for CYMBAL with dynamics: pp .

Handwritten notation for CYMBAL with dynamics: f .

Preview File Only

158 *Tr.*
Musical staff with notes and dynamics: *sfz.*, *mf*, *sfz.*, *mf*, *sfz.*, *mf*, *sfz.*
Tape →

Musical staff with notes and dynamics: *sfz.*, *mf*, *sfz.*, *mf*, *sfz.*, *mf*, *sfz.*

Musical staff with notes and dynamics: *sfz.*, *mf*, *sfz.*

Musical staff with notes and dynamics: *sfz.*, *p*, *sfz.*

Musical staff with notes and dynamics: *p*, *sfz.*, *mf*, *sfz.*

Bass
Clar.
Musical staff with notes and dynamics: *f*, *sfz.*, *mf*, *sfz.*
Acad

Musical staff with notes and dynamics: *f*, *pp*

Musical staff with notes and dynamics: *pp*, *f*

162 *Tr.*
Musical staff with notes and dynamics: *sfz.*, *mf*, *sfz.*, *mf*, *sfz.*

Musical staff with notes and dynamics: *sfz.*, *mf*, *sfz.*, *mf*, *sfz.*

Musical staff with notes and dynamics: *sfz.*, *mf*, *sfz.*, *mf*, *sfz.*

Musical staff with notes and dynamics: *p*, *p*, *sfz.*

Musical staff with notes and dynamics: *sfz.*, *p*

(Bass)
Musical staff with notes and dynamics: *f*

Musical staff with notes and dynamics: *f*

Musical staff with notes and dynamics: *pp*, *f*

165

Flute 1

sffz *mf* *sffz* *mf* *sffz* *mf*

TAP →

Flute 2

sffz *mf* *sffz* *mf* *sffz* *mf*

Oboe/Clarinet

sffz *mf* *sffz* *mf* *sffz* *mf*

Horn

p *sffz* *mf* *sffz* *p*

Bass Clarinet

sffz *p* *sffz* *mf*

Clarinet (ARCO)

f

Percussion #1

f

Percussion #2

GONG

p

168

Flute 1

sffz *p*

→

Flute 2

sffz *p*

Oboe/Clarinet

sffz *p*

Horn

p *sf* *sffz* *mp*

Bass Clarinet

sffz *p*

Clarinet

sf *p* *sf* *ff*

Percussion #1

Percussion #2

TOMTOMS

f *p*

171

TAPE →

Flute

Clarinet

Bass Clarinet

Bassoon

Trumpet

Trombone

Percussion

WOODBLOCK

BONGOS

BASS DRUM

49

175

Flute

Clarinet

Bass Clarinet

Bassoon

Trumpet

Trombone

Percussion

50

179

Flute 1

p *sfz.*

Tape →

Flute 2

sfz.

E♭ Clar.

sfz.

Horn 1

p *sfz.*

Bass Clar.

sfz. *p* *sfz.*

Cl.

f

SIGNAL

Horn #1

pp *f*

SONG

Horn #2

pp *f*

51

182

Flute 1

sfz. *pp*

(E2)

Flute 2

sfz. *pp*

E♭ Clar.

sfz. *pp*

Horn 1

sfz.

Bass Clar.

sfz. *pp*

Cl.

p *sfz.* *pp*

BASS DRUM

Bass Drum

pp *mf* *pp*

TOMTOMS

Tomtoms

mf *f* *mp* *mf* *p*

52

Preview File Only

184

Tr 1

TAP →

m.v.

p ff

Tr 2

m.v.

p ff

Tr 3

m.v.

p ff

Tbn 1

m.v.

p ff

Tbn 2

m.v.

p ff

Eup

(F.) sfz

p mp

Per #1

pp f mp

Per #2

CYMBAL

f pp mf mp

187

Tr 1

TAP →

m.v.

p ff

Tr 2

m.v.

p ff

Tr 3

m.v.

p ff

Tbn 1

m.v.

p ff

Tbn 2

m.v.

p ff

Eup

sp

p mf f sfz

Per #1

mf f

CYMBAL (1)

Per #2

(F.)

p mf f

CYMBAL

140

TR

TR

TR

TR

Bass Clar.

Perc #1

Perc #2

SYMBOL (2)

f

ff

p

mf

pp

144 Picc.

(8) (B)

Fl.

Clar.

BASS DRUM

TOM TOMS

mf

sfz

f

sfz

mf

pp

mf

Preview File Only

197 (8)

Flute 1

p *sffz*

TAPE →

Flute 2

p *sffz*

Clar. B \flat

p *sffz*

Horn

ff *sffz* *mf* *sffz*

sizz

Bass Clar.

p *sffz*

Clar. C

f *p*

CYMBALS

Cym #1

pp *f*

Cym #2

pp *f*

200 (9) $\text{♩} = 40$

Flute 1

sffz *mf*

TAPE OFF WITH PERCUSSION ↓

Flute 2

sffz *mf*

Clar. B \flat

sffz *mf*

Horn

(*ff*) *mf*

Bass Clar.

sffz *mf*

Clar. C

ff *mf*

WOODBLOCK

Woodblock

f *mf*

BONGO

f *mf*

(F₂) ♩=60
203 (6)

WOODBLOCK
BASS DRUM
BONGO AGONG
TANTONS

START TAPES ID6
FADE IN FROM 0

209

TAPES

WOODBLOCK
BASS DRUM
SYMBOL
BONGO
TANTONS
GONG



206
(5)

TAPES

CYMBOLS
WOODBLOCK
BASS DRUM
CYMBOL
TANTONS
GONG

212

TAPES

WOODBLOCK
BASS DRUM
CYMBOLS
GONG

Preview File Only

215
 B♭ Clar.

TAPE →

Acc. #1
 Bass Drum, Woodblock, Cymbals

Acc. #2
 Gong, Tom-Toms

218

B♭ Clar.

TAPE →

Acc. #1
 Woodblock

Acc. #2
 Gong, Gong

Preview File Only

Mike Douglas
 1985
 + 1991