

FOR ISABEL ETTENAUER

LA MAISON DE  
FRED

FOR SPEAKING, SINGING +  
WHISTLING FITOY - PIANIST

Preview File Only

JOE CUTLER (2001)

①

♩ = C.124

# LA MAISON DE FRED

(Spoken)

QUARTER TO. THAT MEANS, TEN MINUTES FROM THE TUBE STATION TO HERE. USED TO BE FIVE. WHICH CONVINCES ME THE STREETS MUST HAVE GOT SLOWLY LONGER. CERTAINLY A LOTS CHANGED. NOW THE OLD COSMO CAFE'S GONE AS WELL. ALL THAT'S LEFT NOW FOR OUR SORT IS THAT LITTLE HUNGARIAN PLACE, LOUIS'S PATISSERIE. I TURN TOWARDS IT.

PLAY 3x

Toy Piano

Musical notation for the first system, featuring piano accompaniment and a spoken line. The piano part consists of a simple melody in the right hand and a bass line in the left hand. The spoken line is written above the piano part.

(Spoken)

PLAY 4x

SUB-DEN LY I HAVE THIS DIM INK-LING THAT

Musical notation for the second system, featuring piano accompaniment and a spoken line. The piano part continues with the same melody and bass line. The spoken line is written above the piano part.

A YOUNG GIRL IS STAND-ING IN FRONT OF ME A TOU-RIST A FRENCH

Musical notation for the third system, featuring piano accompaniment and a spoken line. The piano part continues with the same melody and bass line. The spoken line is written above the piano part.

WO-MAN SOON SHE DE-GINS TO SPEAK TO ME IN FRENCH

Musical notation for the fourth system, featuring piano accompaniment and a spoken line. The piano part continues with the same melody and bass line. The spoken line is written above the piano part.

EXCUS-EZ moi MA-DAME VOUS PAR-LEZ FRAN-CAIS

CAN I SPEAK FRENCH? NOW THERE'S A STORY! BUT I'M FAR TOO MODEST TO TELL IT AT THE MOMENT; SO I JUST ANSWER:

Musical notation for the fifth system, featuring piano accompaniment and a spoken line. The piano part continues with the same melody and bass line. The spoken line is written above the piano part. A box highlights a specific musical phrase with the instruction 'RIT AD LIB'.

Piano

OUI UN PEU VOUS VOULEZ? ALORS MA-DAME JE CHERCHE

Handwritten musical score for the first system. The treble clef staff contains the melody with lyrics: OUI UN PEU VOUS VOULEZ? ALORS MA-DAME JE CHERCHE. The bass clef staff provides accompaniment. Dynamic markings include *mf* and *f*. Accents (>) are placed over notes.

LA MAISON DE FRED DE FRED? C'EST UN AMI DE VOUS

Handwritten musical score for the second system. The treble clef staff contains the melody with lyrics: LA MAISON DE FRED DE FRED? C'EST UN AMI DE VOUS. The bass clef staff provides accompaniment. Dynamic markings include *mf*. Accents (>) are placed over notes.

VOUS N'AVEZ PAS L'A-DRESSE LA-DRESSE? OUI C'EST

Handwritten musical score for the third system. The treble clef staff contains the melody with lyrics: VOUS N'AVEZ PAS L'A-DRESSE LA-DRESSE? OUI C'EST. The bass clef staff provides accompaniment. Dynamic markings include *f*. Accents (>) are placed over notes.

ATTENDEZ UN PEU SI VOUS PLAÎT MARE-FIELD GAR-DENS LA MAISON

Handwritten musical score for the fourth system. The treble clef staff contains the melody with lyrics: ATTENDEZ UN PEU SI VOUS PLAÎT MARE-FIELD GAR-DENS LA MAISON. The bass clef staff provides accompaniment. Dynamic markings include *f*. Accents (>) are placed over notes.

DE FRED ZIEG — MOUNDE FRED ) VOUS DEVEZ CERTAINEMENT LA CONNAÎTRE...

Handwritten musical score for the fifth system. The treble clef staff contains the melody with lyrics: DE FRED ZIEG — MOUNDE FRED ) VOUS DEVEZ CERTAINEMENT LA CONNAÎTRE... The bass clef staff provides accompaniment. Dynamic markings include *ff*. Accents (>) are placed over notes.

3

A TEMPO (WITH DRIVE)

*Toy Piano*

ff cresc. ff cresc.

mf ff

ff mf

(SPOKEN)

OH YES, I KNOW IT! THE FREUD HOUSE  
FREUD MUSEUM AS IT'S CALLED THESE DAYS....

mp

NOTHING ALTERED AFTER THE DEATH OF THE GREAT MASTER, EVERYTHING LEFT UNTOUCHED, INTACT, EVEN . . . .

THE BOOKS. THE PAINTINGS. THOSE BARK DEPRESSING SCULPTURES . . .

Toylano

Handwritten musical notation for the first system, featuring piano and right-hand parts with dynamic markings like mp and LH.

THE COUCH . . . . AH YES, THE COUCH. AND SUDDENLY A MEMORY COMES BACK TO ME FROM CHILDHOOD: ONE SO STRONG THAT I'M NO LONGER STANDING ON A LONDON STREET OPPOSITE A FRENCH TOURIST . . . .

Handwritten musical notation for the second system, including piano and right-hand parts with dynamic markings like mp and LH.

A Tempo (♩ = c.124)

NO, I'M ONCE AGAIN AT HOME IN OUR COMFORTABLE FLAT BY ST. STEPHEN'S CATHEDRAL . . .

I CAN STILL HEAR THE BELLS OF OLD STEPHEN'S (OR ARE THEY THOSE OF THE TRAMS?) . . . .

Handwritten musical notation for the third system, showing piano and right-hand parts with dynamic markings like mp and LH, and repeat signs.

I'M SITTING IN MY ROOM PLAYING THE PIANO; IN THE NEXT ROOM MY BROTHER, LITTLE HANS, IS PLAYING SOMETHING ELSE. WHAT HE WAS PLAYING WITH I DON'T KNOW TO THIS VERY DAY; I ONLY REMEMBER HOW OFTEN OUR MOTHER USED TO SAY TO HIM . . . .

Handwritten musical notation for the fourth system, including piano and right-hand parts with dynamic markings like mp and LH.

"HANS, IF YOU DON'T STOP PLAYING WITH THAT, I'M GOING TO ASK DOCTOR FRED TO CUT IT OFF!" . . . .

Handwritten musical notation for the fifth system, featuring piano and right-hand parts with dynamic markings like mp and LH, and a 'PLAY 3X' instruction.

5.

... AND THOUGH I DON'T YET KNOW WHO HE WAS—THIS DOCTOR TO WHOM MY BROTHER WENT FROM TIME TO TIME, AND ALWAYS RETURNED TREMBLING....

THESE WORDS BEGAN TO KINDLE AN UNCOMFORTABLE ANXIETY IN MY BREAST.....

by piano

Piano accompaniment for the first section, showing two measures of music with 'RPT AD. LIB.' markings.

... BUT I NEVER EXPECTED THAT THE DAY WOULD SOON ARISE WHEN I, TOO, WOULD BE FORCED TO VISIT THE DOCTOR.....

I WAS NOW EIGHTEEN AND HAD GROWN INTO A HANDSOME YOUNG GILL....

Piano accompaniment for the second section, including a 'RIT' marking and a smiley face drawing.

Allegro  $\text{♩} = \text{C} = 124$

(Spoken)

Now Young LA-34 ASKED THE Doc-TOR Po-LITE-Ly WHAT'S

Vocal line for the first section of the spoken part.

(Spoken HYSTERICALLY + quite QUICKLY)

THE MAT-TER WITH You

Vocal line for the second section of the spoken part.

SHE'S SUFFERING FROM HYSTERIA, ANSWERED MY MOTHER. SHE INTRODUCED HER TO SO MANY YOUNG MEN, BUT SHE WANTS NONE OF THEM, SAID SHE WANTS TO GO TO UNIVERSITY AND STUDY LITERATURE. FRENCH LITERATURE AT THAT! AND BECAUSE HER FATHER WON'T ALLOW IT, NOW SHE DOES NOTHING BUT CRY, DAY AND NIGHT....

RPT AD. LIB.

AND THE GILL HER-SELF WHAT DOES SHE THINK

Vocal line for the third section of the spoken part.

By THIS TIME, HOWEVER, I'D ARRIVED AT A CERTAIN UNDERSTANDING OF THE FREUDIAN WAY OF THINKING; SO I SAID.....

*Piano*

RPT. AD LIB.

WHE-THER I'M SUFF-ER-ING FROM HY-STER-IA OR NOT I DON'T KNOW FOR CER-TAIN

*mp* *foco*

WHAT IS CER-TAIN IS THAT LAST NIGHT I EX-PE-RIENCED A TER-RIB-LE DREAM

*mp* *cresc.*

IN-DEED SAID THE DO-CTOR SIT-TING UP STRAIGHT AND

*mf*

WHAT SORT OF DREAM WAS IT? WELL, I WAS WITH MY BRO-THER IN A

*p* *foco*

7

Piano

Big DARK Wood our Mo-ther had sent us there To GA-ther

Musical notation for the first system, including piano and bass staves with lyrics 'Big DARK Wood our Mo-ther had sent us there To GA-ther'. Dynamics include mp and p.

MUSH-Rooms BUT Now WHEN I LOOKED DOWN IN-TO

Musical notation for the second system, including piano and bass staves with lyrics 'MUSH-Rooms BUT Now WHEN I LOOKED DOWN IN-TO'. Dynamics include mp and p.

MY LIT-TLE BAS-KET I NOT-ICED IT WAS FULL OF

Musical notation for the third system, including piano and bass staves with lyrics 'MY LIT-TLE BAS-KET I NOT-ICED IT WAS FULL OF'. Dynamics include mp.

SNAKES And AL-So EELS!

Musical notation for the fourth system, including piano and bass staves with lyrics 'SNAKES And AL-So EELS!'. Dynamics include mf and f.

(Rushing & excited) AND IN THE MIDDLE OF THE WOOD THERE STOOD AN GIANTIC TOWER

JUST LIKE THE BIBLICAL TOWER OF BABEL, WHICH YOU CAN READ ABOUT IN THE HOLY SCRIPTURES.....

Musical notation for the fifth system, including piano and bass staves with lyrics 'AND IN THE MIDDLE OF THE WOOD THERE STOOD AN GIANTIC TOWER JUST LIKE THE BIBLICAL TOWER OF BABEL, WHICH YOU CAN READ ABOUT IN THE HOLY SCRIPTURES.....' and 'RPT. AD LIB'. Dynamics include f.



Toy piano

VE-ry IN-TE-RES-ting MY CHILD SAID THE DOC-TOR WRI-ting SOME-thing DOWN

Musical notation for the first system, including treble and bass staves with notes and rests.

WITH GREAT PAS-sion AND THEN? THEN I TOOK MY Bro-ther's HAND AND HELPED HIM

Musical notation for the second system, including treble and bass staves with notes and rests.

CLIMB THE Tower AND UP AT THE TOP OF THE Tower WE FOUND A

Musical notation for the third system, including treble and bass staves with notes and rests.

LIT THE ROOM JUST LIKE ONE FINDS AT THE TOP OF A LIGHT-HOUSE...

Musical notation for the fourth system, including treble and bass staves with notes and rests.

... AND IN THE ROOM STOOD A LITTLE MAN... WHO WAS?  
WHO WAS NONE OTHER THAN YOU, HERR DOCTOR!  
AND WHAT DID HE SAY, THIS MAN? —  
HE DIDN'T SAY ANYTHING HE SANG. LIKE THIS...

Musical notation for the fifth system, including treble and bass staves with notes and rests, ending with a large arrow pointing right.

9.

(SUNG WITH MELODY OF RIGHT HAND)

OH CHIL—DREN MINE , WHAT BOTH YOU VEX

Handwritten musical notation for the first system. The right hand contains lyrics: "OH CHIL—DREN MINE , WHAT BOTH YOU VEX". The left hand provides piano accompaniment with chords and a bass line. A dynamic marking "mp" is present in the first measure.

PER—HAPS SOME OE—DI—PAL COM—PLEX BE NOT AF—RAID! THIS KIND—LY WITCH WILL

Handwritten musical notation for the second system. The right hand contains lyrics: "PER—HAPS SOME OE—DI—PAL COM—PLEX BE NOT AF—RAID! THIS KIND—LY WITCH WILL". The left hand provides piano accompaniment.

CURE YOU BOTH LI—THAT A HITCH I AM THAT LEA—NER

Handwritten musical notation for the third system. The right hand contains lyrics: "CURE YOU BOTH LI—THAT A HITCH I AM THAT LEA—NER". The left hand provides piano accompaniment. A blue watermark "Preview File Only" is visible across the system.

SAGE WHO CURES THE RATMAN OF HIS RAGE THE WOLF—MAN TOO OR

Handwritten musical notation for the fourth system. The right hand contains lyrics: "SAGE WHO CURES THE RATMAN OF HIS RAGE THE WOLF—MAN TOO OR". The left hand provides piano accompaniment.

THE—EA—PY COMES OF—TOU HERE TO PLAY WITH ME

Handwritten musical notation for the fifth system. The right hand contains lyrics: "THE—EA—PY COMES OF—TOU HERE TO PLAY WITH ME". The left hand provides piano accompaniment.

And Now You Two HAVE COME TO GREET ME IN MY LAIR

Ho - cus Po - cus EL-DEE BUSH a-way with your PEE-SAMS without! sits

BUT DEC-DEE THERE-LI-TAW YOUR ROOM WHAT GLOWS AND FLICKER IN THE GLOOM IT

Looks so LIKE A GREAT BIG ov-er MY FE-ARS A-LAS I CAN-NOT

Go-VERN ACH CHILD THAT'S ALL HA-LLU-ci- Na-tion BROUGHT

on BY YOU AN-AL FIX A-tion COME CHILD BY THE HAND YOU

TAKE YOU AND IN MY ov-er HEE HEE! TAKE YOU!

**FAST & FURIOUS**

BUT SEEING THAT HE MEANT TO BURN US... WE GAVE ONE SHOVE + INTO THE FURNACE!... HOWS FOCUS! WITCHES BREW!... OLD DEVIL, NOW WE'RE RID OF YOU!

\* BLOW WHISTLE IN TIME WITH R.H. of TOY PIANO

*Toy Piano*

ff

ff

ff

ff

ff

WHISTLE AS ACADEMIA

ff

— AND THEN I AWOKE FROM A DEEP SLEEP, AND BUT DOCTOR, WHAT'S  
THE MATTER WITH YOU? WHY SO PALE?

A GHOST!  
ONE WOULD ALMOST THINK YOU'D SEEN

— I THINK, SAID DOCTOR FREUD TREMBLING, THAT THE BEST COURSE OF  
TREATMENT WOULD BE FOR THIS YOUNG GIRL TO GO TO THE UNIVERSITY, TO  
STUDY FRENCH.

13.

# AS A GHOSTLY WALTZ

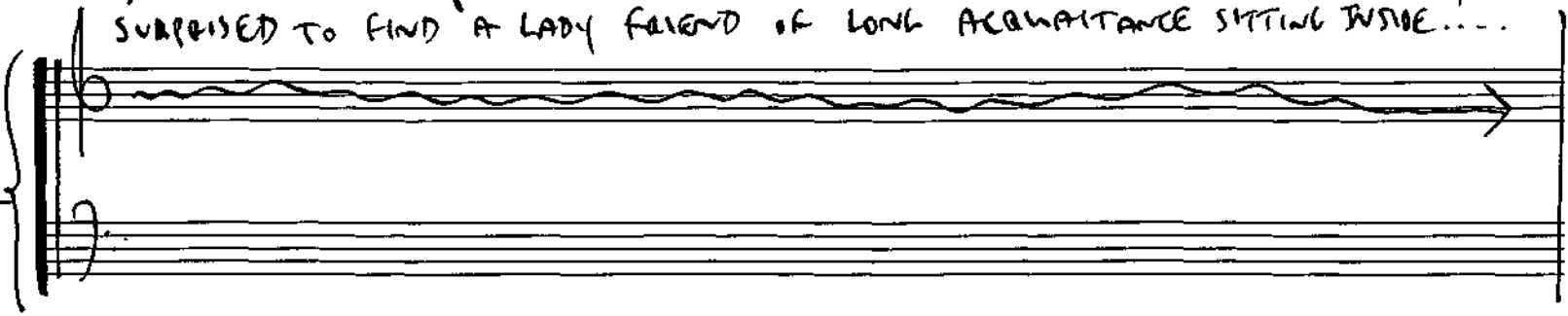
Poly Piano

Tempo meno (♩ = 120) THREE O'CLOCK, YES,

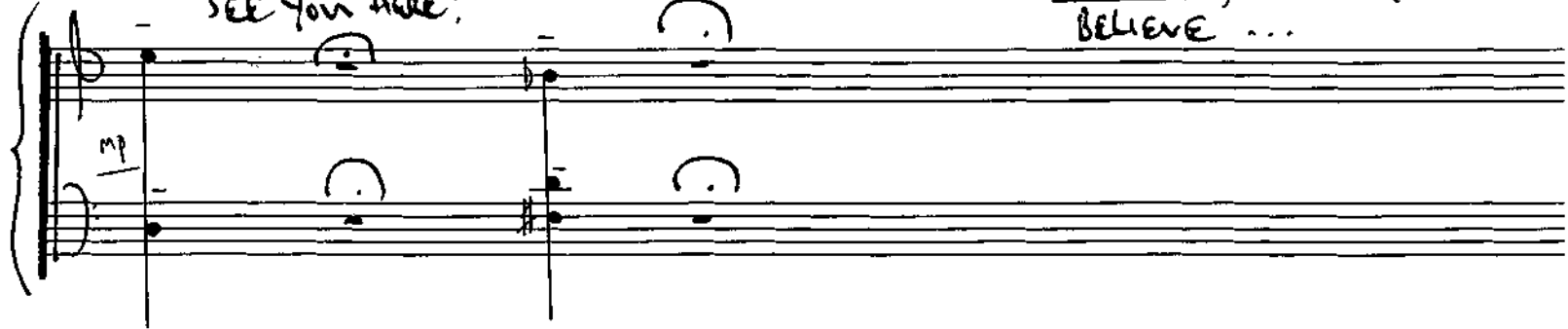
HIS STILL THERE IN FRONT OF MY EYES, HIS DOCTOR, WITH THAT COMICAL  
 EXPRESSION OF HIS... BUT WHAT AM I RAMBLING ON ABOUT? WHERE AM I?  
 I'M STILL STANDING ON THE STREET, THE YOUNG FRENCH LADY HAS LONG SINCE VANISHED AND...

.. AH WELL. I STEP INSIDE LOUIS'S PÂTISSERIE AND AM NOT OVERLY SURPRISED TO FIND A LADY FRIEND OF LONG ACQUAINTANCE SITTING INSIDE....

Taylor



GREETE! HELLO!  
How NICE TO SEE YOU HERE!  
ACH MIZZI, DO YOU KNOW WHAT'S JUST HAPPENED?  
I MET THIS YOUNG TOURIST - A FRENCH GIRL -  
AND SHE ASKED ME - IN FRENCH, WOULD YOU BELIEVE ...



O GRETEL PLEASE, LET THAT WAIT, JUST A MOMENT PLEASE... FIRST  
YOU SIMPLY MUST TRY A PIECE OF THIS FABULOUS  
GINGERBREAD .....



Preview File Only

*[Signature]*  
NEASDEN  
July 22<sup>nd</sup>  
2001