

[working score]

**on/off**

[2000]/electric guitar-contrabass-sampler/fp/[rout]/the warehouse/OCT-2000

Preview File Only

Paul whitty

electro  
guitar  
p dot

contra  
bass  
+ hyper  
bass

00

III/IV

~~005~~

~~004~~

~~003~~

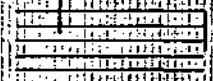
~~006~~

VI/V

002

8ve

8ve



Preview File Only

013

014

015

016

017

018

019

020

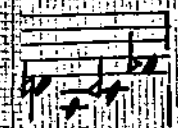
021

022

023

024

025



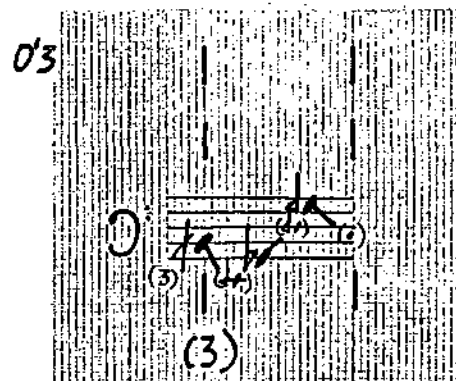
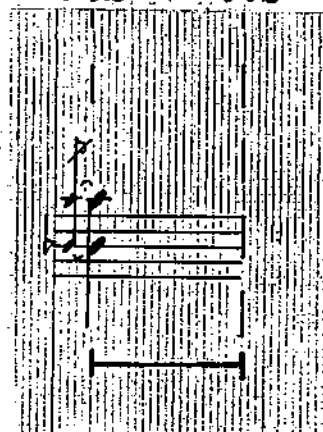
p133

(10)

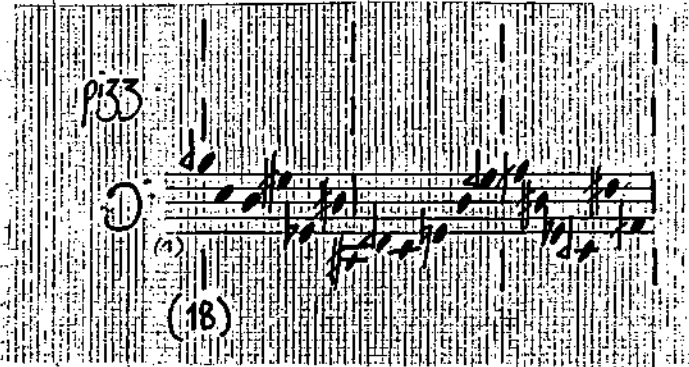


→ 0'26" 0'27" 0'28" 0'29" 0'30" 0'31" 0'32" 0'33" 0'34" 0'35" 0'36" 0'37" 0'38"

elektron gitar



~~0'42"~~ ~~0'43"~~ ~~0'44"~~



~~0'50"~~ ~~0'51"~~

Preview File Only

0'2

V/V

8ve



Volume Pedal



~~0'33~~ ~~0'34~~ ~~0'35~~ ~~0'36~~ ~~0'37~~ ~~0'38~~

PREVIEW FILE ONLY

→ 0'39 0'40 0'41 0'42 0'43 0'44 0'45 0'46 0'47 0'48 0'49 0'50 0'51

*molto sul pont.*



*pizz.*



→ 0'52" 0'53" 0'54" 0'55" 0'56" 0'57" 0'58" 0'59" 1'00" 1'01" 1'02" 1'03" 1'04"

1'05" 1'06" 1'07" 1'08" 1'09" 1'10" 1'11" 1'12" 1'13" 1'14" 1'15" 1'16" 1'17"

Preview File Only

2'33



(11)

0'52"

0'55"

0'54"

0'55"

0'56"

0'57"

0'58"

0'59"

1'00"

1'01"

1'02"

1'03"

1'04"

→ 1'05"

1'06"

1'07"

1'08"

1'09"

1'10"

1'11"

1'12"

1'13"

1'14"

1'15"

1'16"

1'17"

Preview File Only

P.33

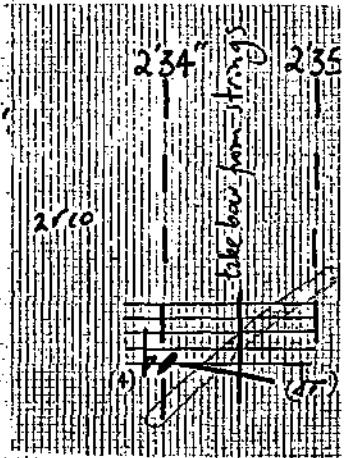
(3)

(6)

→ 1'18" 1'19" 1'20" 1'21" 1'22" 1'23" 1'24" 1'25" 1'26" 1'27" 1'28" 1'29" 1'30"

~~1'31~~ ~~1'32~~ ~~1'33~~ ~~1'34~~ ~~1'35~~ ~~1'36~~ ~~1'37~~ ~~1'38~~ ~~1'38~~ ~~1'40~~ ~~1'41~~ 1'

Preview File Only



~~1'18"~~

~~1'19"~~

~~1'20"~~

~~1'21"~~

~~1'22"~~

~~1'23"~~

~~1'26"~~

~~1'27"~~

~~1'28"~~

~~1'29"~~

~~1'30"~~



PREVIEW FILE ONLY

→ 1'31"

1'32"

1'33"

1'34"

1'35"

1'37"

1'38"

1'39"

1'40"

1'41"

1'42"

1'43"

P'33





→ 1'44" 1'45" 1'46" 1'47" 1'48" 1'49" 1'50" 1'51" 1'52" 1'53" 1'54" 1'55" 1'56"

PREVIEW File Only

1'44"

1'45" 1'46" 1'47" 1'48" 1'49" 1'50" 1'51" 1'52" 1'53" 1'54" 1'55" 1'56"

1'53"

1'54" 1'55" 1'56"

2'04" 2

*molto sul pont.*

2'08" 2'00"

~~144"~~

~~145"~~

~~146"~~

~~147"~~

~~148"~~

~~149"~~

~~150"~~

~~151"~~

~~152"~~

~~153"~~

~~154"~~

~~155"~~

~~156"~~

→ 157"

158"

159"

2'00"

2'01"

2'02"

2'03"

2'04"

2'05"

2'06"

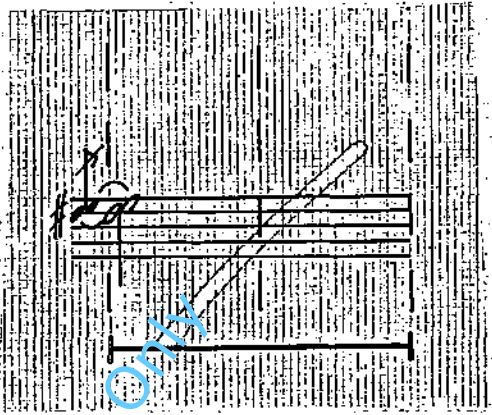
2'07"

2'08"

2'09"

Preview File Only

→ 2'10" 2'11" 2'12" 2'13" 2'14" 2'15" 2'16" 2'17" 2'18" 2'19" 2'20" 2'21" 2'22"



~~2'23"~~ ~~2'24"~~ ~~2'25"~~ ~~2'26"~~ ~~2'27"~~ ~~2'28"~~ ~~2'29"~~ ~~2'30"~~ ~~2'31"~~ ~~2'32"~~ ~~2'33"~~ ~~2'34"~~ ~~2'35"~~

Preview File Only

~~230~~

~~V/V~~

~~238~~

~~219~~

~~220~~

~~221~~

~~222~~

~~122~~

Volume peak

Preview File Only

→ 233

224

225

226

227

228

229

230

231

232

233

234

235



→ 2'36" 2'37" 2'38" 2'39" 2'40" 2'41" 2'42" 2'43" 2'44" 2'45" 2'46" 2'47" 2'48"

Musical notation for a string section. The top part shows a staff with notes and stems. Below the staff is a bowing diagram with a vertical line on the left labeled "trm." and a series of slanted lines representing bow strokes. A circled number "(3)" is written below the bowing diagram.

*arco*

*molto sul pont.*

Musical notation for a string section. The top part shows a staff with notes and stems. Below the staff is a bowing diagram with a vertical line on the left and a series of slanted lines representing bow strokes. A circled number "(5)" is written below the bowing diagram.

~~2'52"~~

2'

*pizz*

6"

~~2'57"~~

~~2'58"~~

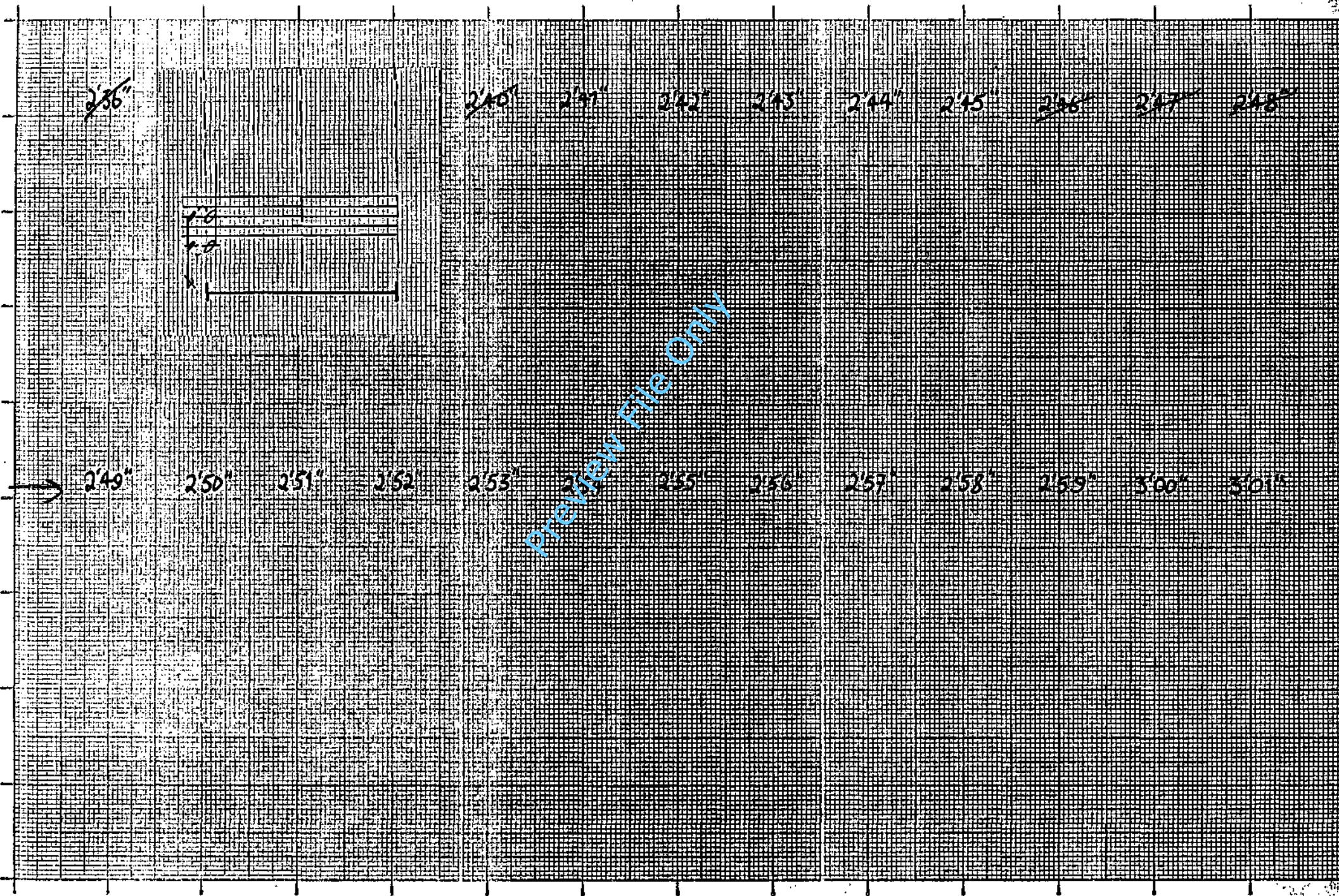
~~2'59"~~

~~3'00"~~

~~3'01"~~

Musical notation for a string section. The top part shows a staff with notes and stems. Below the staff is a bowing diagram with a vertical line on the left and a series of slanted lines representing bow strokes. A circled number "(7)" is written below the bowing diagram.

Preview File Only



Preview File Only

2'35"

2'40"

2'41"

2'42"

2'43"

2'44"

2'45"

2'46"

2'47"

2'48"

2'49"

2'50"

2'51"

2'52"

2'53"

2'55"

2'56"

2'57"

2'58"

2'59"

3'00"

3'01"

2'28"

2'28"

2'28"

→ 3'02" 3'03" 3'04" 3'05" 3'06" 3'07" 3'08" 3'09" 3'10" 3'11" 3'12" 3'13" 3'14"

~~3'15"~~ ~~3'16"~~ ~~3'17"~~ ~~3'18"~~ ~~3'19"~~ ~~3'20"~~ ~~3'21"~~ ~~3'22"~~ ~~3'23"~~ ~~3'24"~~ ~~3'25"~~ ~~3'26"~~ ~~3'27"~~

Preview File Only

~~302~~

~~303~~

~~304~~

~~305~~

~~306~~

~~307~~

~~308~~

~~309~~

~~310~~

~~311~~

~~312~~

~~313~~

~~314~~

→ 315

316

317

318

319

320

321

322

323

324

325

326

327

Preview File Only

260





→ 3'28" 3'29" 3'50" 3'31" 3'32" 3'33" 3'34" 3'35" 3'36" 3'37" 3'38" 3'39" 3'40"

~~3'41" 3'42" 3'43" 3'44" 3'45" 3'46" 3'47" 3'48" 3'49" 3'40" 3'41" 3'42" 3'43"~~

Preview File Only

~~328~~

~~329~~

~~330~~

~~331~~

~~334~~

~~335~~

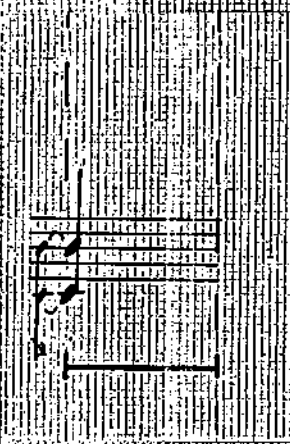
~~336~~

~~337~~

~~338~~

~~339~~

~~340~~



PREVIEW FILE ONLY

→ 341'

342'

343'

344'

345'

346'

347'

348'

349'

340'

341'

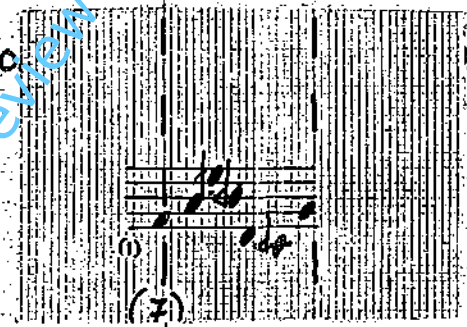
342'

343'

→ 3'44" 3'45" 3'46" 3'47" 3'48" 3'49" 3'50" 3'51" 3'52" 3'53" 3'54" 3'55" 3'56"



~~3'57"~~ ~~3'58"~~ ~~3'59"~~ ~~4'00"~~ ~~4'01"~~ 4'02" 5" ~~4'06"~~ ~~4'07"~~ ~~4'08"~~ ~~4'09"~~



Preview File Only