

Martyn Harry

# **Taking Leave**

for improvisation group  
1993

Preview File Only

# Taking Leave

This piece is based upon two complementary elements, a mode and a chord. Together they fill out the complete chromatic space.



*Taking Leave* similarly falls into two parts. The first part is based on the notes of the mode.



Starting with a unison G, the players are to improvise on the mode, as it unfolds in the treble and bass 'step' notes of the first line. At no time should a player exceed the limits defined for each 'step': in each case the treble note is the highest note to be played for the duration of that 'step' and the bass note the lowest. The movement from one 'step' can either be led by an ensemble director or decided spontaneously by a member of the ensemble. In creating a texture for each 'step', the players should in general stick to the pitches of the mode, with each departure from it sounding like a special event. The music should build up in intensity, reaching a climax on the A minor chord of the second line, which forms the basic harmony of the second part.

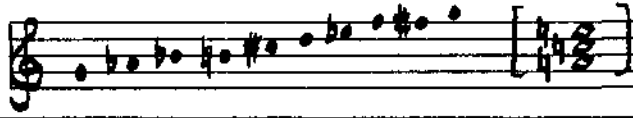


Here the players can play more freely, but at any one time the chords of each 'step' must be sustained by at least one player of the group. At the end of the piece, the music switches back to an octave G, thereby coming 'full circle' and it is possible to begin the first line once more.

The recitation of the Ezra Pound poem, 'Taking Leave of a Friend' is optional. The reciter must be careful to follow the placing of the text as notated in the score.

Martyn Harry  
1993

TAKING LEAVE OF A FRIEND



Reciter: Blue mountains to the north of the walls,  
White river winding about them;  
Here we must make separation  
And go out through a thousand miles of dead grass.

*ppp* *pp* *poco a poco cresc.*

*rit.* *piu animato*

*poco a poco cresc.*

*delente e piangente*

Rec: Mind like a floating cloud  
Sunset like the parting of old acquaintances  
Who bow over their clasped hands at a distance.

*f* *etc.*

*subito mf* *dim* *pp semplice*

*sereno* *impassivo*

*mf subito* *dim* *pp semplice*

*f* *etc.*

(Gatwick Airport, 6.40 am, 28/8/89)