

**bmic**

**M**

This score may be copied at BMIC

All Pages

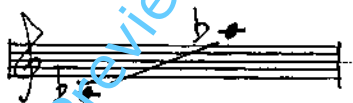
ANTONÍN TUČAPSKÝ

**THREE SONGS**

MEDIUM VOICE AND PIANO

LYRICS

W. H. DAVIES



© A. TUCAPSKY, 1992

# I THE MOON

(1)

W. H. DAVIES

MUSIC:

ANTONÍN TUČAPSKÝ

ANDANTE MODERATO (♩ = 76)

MS

Pi

Handwritten musical notation for the first system. The vocal line (MS) is on a single staff with a treble clef and a key signature of two flats. The piano accompaniment (Pi) is on two staves with a treble and bass clef. The tempo is marked 'ANDANTE MODERATO' with a quarter note equal to 76 beats per minute. The music features a melodic line with eighth and sixteenth notes, and a piano accompaniment with chords and arpeggiated figures. Dynamics include *f* and *mf*. Fingerings are indicated with numbers 1-5. A watermark 'PREVIEW FILE ONLY' is visible across the page.

Handwritten musical notation for the second system, primarily piano accompaniment. It continues the melodic and harmonic material from the first system. The piano part features a steady accompaniment with chords and moving lines in both hands. Dynamics include *p*. A watermark 'PREVIEW FILE ONLY' is visible across the page.

Handwritten musical notation for the third system, featuring the vocal line with lyrics. The lyrics are: "Thy beauty haunts me heart and soul,". The music includes triplet markings over the notes. A watermark 'PREVIEW FILE ONLY' is visible across the page.

Handwritten musical notation for the fourth system, primarily piano accompaniment. It continues the accompaniment for the vocal line. The piano part features sustained chords and arpeggiated figures. Dynamics include *p*. A watermark 'PREVIEW FILE ONLY' is visible across the page.

Handwritten musical notation for the fifth system, featuring the vocal line with lyrics. The lyrics are: "O thou fair moon so close and". The music includes a fermata over the first note of the phrase. A watermark 'PREVIEW FILE ONLY' is visible across the page.

Handwritten musical notation for the sixth system, primarily piano accompaniment. It concludes the accompaniment for the vocal line. The piano part features sustained chords and arpeggiated figures. Dynamics include *p*. A watermark 'PREVIEW FILE ONLY' is visible across the page.

bright. Thy beauty

Piano accompaniment for the first system, featuring a treble and bass clef with various chords and melodic lines.

makes like the child that cries a-loud to own thy light.

Piano accompaniment for the second system, including a 'p' dynamic marking and a 'Preview File Only' watermark.

the little child

Piano accompaniment for the third system, including an '8' marking and a 'p' dynamic marking.

that lifts each arm to press them to her so - soon

Piano accompaniment for the fourth system, including an '8' marking.

warm, warm,

Though there are birds that sing this night

with thy white beams across their

throats, — — — — — Let my deep silen-

-ce speak for me more than for them their sweetest notes: —

RITARD *a tempo* *sosten.*  
 RIT. *a tempo* *sosten.* Who worship thee till

mu - sic fails — — is grea - - ter than thy