

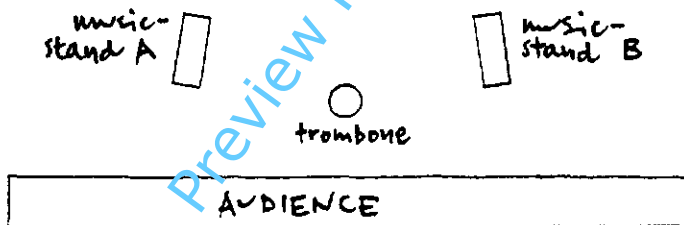
I Trombone

DAVID SAWER
mute (1989)
for solo trombone

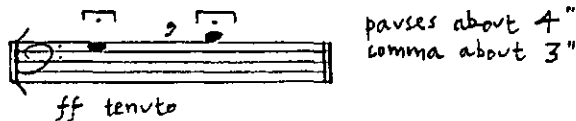
Commissioned by the Park Lane Group with funds provided by the Greater London Arts.

The player needs 3 mutes: cup, straight, plunger. Since they are to be used swiftly, it is useful if the player has the mutes either attached in 'pockets' around his waist, or set close beneath the music-stand A, on a ledge.

2 music-stands are needed: music-stand A, on the player's right-hand side, holds music A, music-stand B, on the player's left-hand side, holds music B. The trombone, on its stand, is placed centre-stage, slightly upstage.



To begin the performance, the player plays, offstage, (on a second trombone) 2 notes:



he then enters, without the trombone, and walks towards the onstage trombone, lifts it to his mouth and begins the piece with cue 1.

mute

(1989)

David Sawer

for solo trombone

CON SORD
(cup)

48

wistful

2

Preview File Only

BRITISH MUSIC INFORMATION CENTRE
 12, Stratford Place, London, W.1

4

CON SORD (plunger) 84

fast turn to left
attacca
5
SENZA SORD

6

CON SORD (wp) 132

staccatiss
sfz
p
sfz p
sfz p
sfz p
sfz p
sfz p

slow turn to left
attacca
7
SENZA SORD

CON SORD
(Harmon)

♩ 132

8

Handwritten musical score for a piece titled "CON SORD (Harmon)". The score consists of ten staves of music. The first four staves feature complex rhythmic patterns with triplets and accents, marked with dynamics like "p", "sfz", and "p". The fifth and sixth staves show a more rhythmic, percussive texture with "sfz" and "sffz" markings. The seventh and eighth staves continue with similar rhythmic patterns. The ninth and tenth staves are marked "free" and "legato", featuring long, sweeping lines with "ppp swb" and "sfz" markings. A large diagonal watermark "Preview File Only" is visible across the middle of the page.

SENZA SORD slow turn to left **attacca 9**

ppp

Detailed description: A single staff of music in bass clef, 2/4 time. It contains a half note G2, a dotted half note G2, and a half note G2. A slur covers the first two notes. A circled '9' is at the end. Above the staff, 'SENZA SORD' is written, and a box contains 'slow turn to left'. Below the staff, 'ppp' is written.

CON SORD (Harmon) (♩ 132) slow turn to left **attacca 11**

sfzpp sffz SENZA SORD

Detailed description: A single staff of music in bass clef, 2/4 time. It contains a dotted half note G2 and a half note G2. A slur covers the first note. A circled '10' is at the beginning. Above the staff, 'CON SORD (Harmon)' and '(♩ 132)' are written. A box contains 'slow turn to left'. Below the staff, 'sfzpp' and 'sffz' are written, followed by 'SENZA SORD'.

CON SORD (wvp) ♩ 66

pp, ppp, mp, sfz, f, sfz, f, sfz, f, sfz, f, sfz, f

Detailed description: A multi-measure rest for two measures (measures 11 and 12). The notation consists of six staves. The top staff is in 2/4 time and contains a half note G2, a dotted half note G2, and a half note G2. The following staves contain various rhythmic patterns, mostly triplets of eighth notes. Dynamics include pp, ppp, mp, sfz, f, and sfz. A circled '12' is at the beginning.

Handwritten musical notation for guitar, measures 1-4. It features complex rhythmic patterns with triplets and slurs. Dynamics include *sffz* and *flz*. Annotations include "change to Harmon" and "change to plunger".

Handwritten musical notation for guitar, measures 5-8. It includes tremolos and fast note changes. Dynamics include *fff*, *sffz*, and *fff*. Annotations include "trem with, mute +/-", "very fast change of notes", "about 10\"", "SENZA SORD", "fast turn to left", and "attacca".

13

Preview File Only

CON SORD (plunger) ! 66

14

Handwritten musical notation for guitar, measures 9-12. It starts with a plunger and features a *diminuendo*. Dynamics include *p* and *mp*.

Handwritten musical notation for guitar, measures 13-16. It includes expressive phrasing and piano dynamics. Dynamics include *ppp* and *pp*.

Handwritten musical notation for guitar, measures 17-20. It features "poco gliss" markings and a piano dynamic.

Handwritten musical notation for guitar, measures 21-24. It features "poco gliss" markings and a mezzo-piano dynamic.