

SCENA II

for Solo Cello and Ensemble

GRAHAM WILLIAMS

Preview File Only

INSTRUMENTATION

Solo Cello (amplified)

3 Trumpets

2 Tenor Trombones

1 Bass Trombone

Electric Guitar

Electric Bass Guitar } sounding an octave lower than written

Hammond Organ  
(doubling Electric Piano)

TAPU DULAY.

Percussion I:

3 Suspended Cymbals  
(High, medium, low)

3 Bongos  
(High, medium, low)

1 Pedal Timpani

Percussion II

3 Gongs  
(High, medium, low)

1 Side Drum

1 Bass Drum

5 Tom-toms

1 Pedal Timpani

Duration: 20 mins.

Chris  
Markie Fyfe Howard/Thomas  
Bonford  
Jan Paul Lewis  
Raja Williams  
Tim W  
Danyel Sims  
Harold

Dick Parr

John Howard

# STAG-1 PLAN

PERCUSSION

1	2
---	---

TRON BOWLS

1	2	BYRS
---	---	------

TRUMPETS

1	2	3
---	---	---

RHY. & PIANO	HAMMONDS ORGAN
-----------------	-------------------

BASS  
GUITAR

SOLO  
CELLO

RHY.  
GUITAR

CONDUCTOR

LENTO ♩ = 40

1 TRUMPETS 2 3

MUTE

*p* *pp* *p*

1 TENOR TROMBONES

2

3 BASS TROMBONES

4 2 4 3 4

4 4 4 4 4

GUITAR

SOLO CELLO

BASS GUITAR

4 2 4 3 4

4 4 4 4 4

HAMMOND ORGAN

*p* *pp* *p* *p* *pp* *p*

I SUS. CYM. MED/SOFT STICKS

PERC.

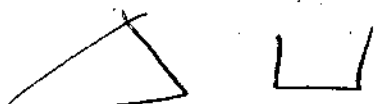
GONG

II

*pp* *pp*

BRITISH MUSIC INFORMATION CENTRE  
18, Stratford Place, London, W.1

2!



1  
2  
3

TP. 1  
2  
3

MUTE OUT  
MUTE OUT  
MUTE OUT

*pp*  $\text{♩} = 50$

1  
2  
3

TRB 1  
2  
3

MUTE  
MUTE  
MUTE

*pp*  $\text{♩} = 50$

Piu mosso  $\text{♩} = 50$

5 2 4

4 4 4

G.

*p*

VC

B' GUITAR

Piu mosso  $\text{♩} = 50$

5 2 4

4 4 4

ORGAN

*pp*

I  
II

PERC.

SUS. CYM  
GONG  
*pp*

Preview File Only

10

TP. 1 2 3

TRB. 1 2 3

3 2 3 4

4 4 4 4

G

VC.

B/G

10

3 2 3 4

4 4 4 4

ORGAN

PERC. I II

Sus. Cym.

60wr

pp p

1  
2  
3

TP.

1  
2  
3

TRB.

3 4 3

4 4 4

G

BG

VC.

B'G.

3 4 3

4 4 4

ORGAN

I

Sus. Cym.

PERC.

II

GONG

Preview File Only

TP. 1 2 3

TRB 1 2 3

2 4 4

G.

VC.

B.G.

2 4 4

20

ORGAN

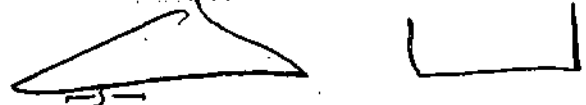
PERC.

Sus. Cym (LET RING) TO BONGOS (HARD STICKS) BONGOS

GONG TO S.D.

S.D.

6.



Handwritten musical score for a percussion ensemble. The score is divided into several sections: TR (Trumpet), TRB (Trumpet Bass), G. (Guitar), VC. (Violin/Celli), BIG. (Big Drum), ORGAN, and PERC (Percussion).

**TR (Trumpet):** Three staves (1, 2, 3) with notes and rests. Includes a 3-measure rest in the first measure.

**TRB (Trumpet Bass):** Three staves (1, 2, 3) with notes and rests. Includes a 3-measure rest in the first measure.

**G. (Guitar):** One staff with notes and rests. Includes a 3-measure rest in the first measure.

**VC. (Violin/Celli):** One staff with notes and rests. Includes a 3-measure rest in the first measure.

**BIG. (Big Drum):** One staff with notes and rests. Includes a 3-measure rest in the first measure.

**ORGAN:** Two staves with notes and rests. Includes a 3-measure rest in the first measure.

**PERC (Percussion):** Two staves (I and II) with notes and rests. Includes a 3-measure rest in the first measure. Staff I is labeled "BONGOS" and Staff II is labeled "S.D.". Includes a 3-measure rest in the first measure.

**Annotations:** "To SUS. LYM." and "TO GONG" are written at the end of the Percussion staves.

**Watermark:** "Preview File Only" is written diagonally across the center of the page.



TP. 1 2 3

TRB. 1 2 3

3 2 4 5  
4 4 4 4

G.

VL.

BG.

3 2 4 5  
4 4 4 4

ORGAN

PERC I II

SUS. OYM.

GONG

1  
2  
3

TP.

1  
2  
3

TRB.

MUTE OUT

MUTE OUT

MUTE OUT

p

p

3 4

4 4

STRINGENDO - - - - -

G.

p

p

5

VC.

B.G.

3

8vs

3

3

5

p

3 4

4 4

STRINGENDO - - - - -

ORGAN

Suc. Cym.

PERC.

GONG

PERC.

p

no dsb?

TP.

1 MUTE OUT

2 MUTE OUT

3 MUTE OUT

TRB.

1

2

3

VS  
VCL

3

4

(♩=80) A TEMPO ♩=50

G.

BG.

(8 VE)

VC.

3

4

(♩=80) A TEMPO ♩=50

ORGAN

8va BASSA

8m BASSA

PERC.

I

II

GONG

LET RING TO B.D.

B.D.

TO BONGOS

Preview File Only

40

1 MUTE

TP. 2 MUTE

3 MUTE

G. STOP

SOLS VC CON FUOCO

B.G.

40

5

ORGAN

8va BASSA

(CLUSTER) 8va BASSA

I BONGOS TO SUS. CYM.

II B.D. TO GONG

VC

VC.

VC

50

VC

VC

SUS. CYM. (STICK REG.)

PERC. I 3 4

PERC. II 3 4

GONG

pp

VC

SUS. CYM.

PERC. I 4 4

PERC. II 4 4

GONG

Rim. > LET RING

VC

PERC. I

PERC. II

GONG

p

VC

SUS. CYM.

PERC. I

PERC. II

GONG

p

12.

VC

VC

PERC. I  
II

STOP

VC

VC

VC

VC

PERC. I  
II



1  
2  
3

TP

MUTE

MUTE

MUTE

p

1  
2  
3

TRB

MUTE

MUTE

MUTE

3  
4

5  
4

G.

VC

BG

3  
4

5  
4

ORGM

I

PERC.

II

SUS. CYM. (Rim)

LET RING

GONG LET RING

Preview File Only

14.

1  
2  
3

TP.

1  
2  
3

TRB.

3

4

G

BG

3

4

ORGAN

SUR. CHM.

I

PERC.

GONG.

II



TP. 1 2 3

TRB. 1 2 3

G. B.G.

ORGAN

PERC. I II

SUS. CYM. GONG. LET RING

VS  
VOL

Preview File Only

Snr

1  
2  
3

TR

1  
2  
3

TRB

4

4

G.

VC

B.G.

4

4

ORGAN

PERC II

Preview File Only

1  
2  
3

TP.

3 4  
4 4

G

VC

B.G.

3 4  
4 4

ORGAN

8VE BASSA

PERC. II

GONG.

End

1  
TB. 2  
3

5 4  
4 4

G

VC

B.G.

5 4  
4 4

ORGAN

PERC. I  
II

GONG

SUS. CWM. (BELL)

pp

ppp

Preview File Only

Handwritten musical score for Trumpets (TP), Trombones (TRB), and Violas (VC). The score includes dynamic markings such as *ff* and *p*, and articulation like slurs and accents. A blue watermark "Preview File Only" is visible across the page.

**TP**

**TRB**

**VC**

100

Handwritten musical score for Trombones (TRB), Guitar (G.), Viola (VC), Bass Guitar (BG.), and Organ. The Organ part includes a right-hand (RH) section. The score includes dynamic markings such as *p* and *8ve*, and articulation like slurs and accents. A blue watermark "Preview File Only" is visible across the page.

**TRB**

**G.**

**VC**

**BG.**

**ORGAN**

The image shows a musical score for four instruments: G (Guitar), VC (Violoncello), BG (Basso Continuo), and ORGAN. The score is divided into two systems. The first system includes the G, VC, and BG staves. The G staff has a treble clef and contains several chords and a melodic line. The VC staff has a bass clef and features several triplet markings. The BG staff has a bass clef and contains a simple bass line. The second system includes the BG and ORGAN staves. The BG staff has a bass clef and contains a simple bass line. The ORGAN staff has a grand staff (treble and bass clefs) and contains a complex accompaniment. The tempo marking "PIU MOSSO" is written in large letters across the VC and BG staves in both systems. A blue watermark "Preview File Only" is visible diagonally across the page.

110

1st  
2nd  
3rd

1st  
2nd  
3rd

$\text{♩} = 60$

5 4 3 4  
4 4 4 4

G.

VC

BG

$\text{♩} = 60$

110

5 4 3 4  
4 4 4 4

ORGAN

1  
2  
3

TRP.

1  
2  
3

TRB.

5 4 3 4

4 4 4 4

PIU MOSSO

G

VC

BG.

5 4 3 4

4 4 4 4

PIU MOSSO

ORGAN



TP  
1  
2  
3

TRB.  
1  
2  
3

3  $\text{♩} = 72$

STRINGENDO

4

G.

VC

BG.

3  $\text{♩} = 72$

STRINGENDO

4

ORGAN

PERC.  
I

PERC.  
II

Meno meno

TD 1 2 3

TRB 1 2 3

(♩=80) TEMPO 1 ♩=50

Meno meno

G

VC

BG

(♩=80) TEMPO 1 ♩=50

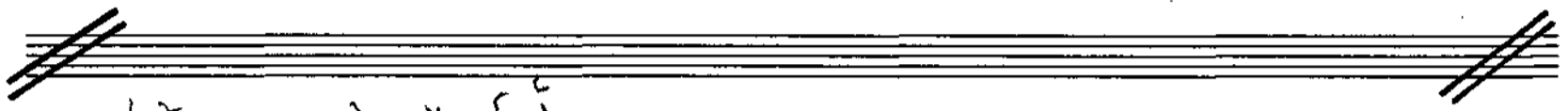
ORGAN

PERC. I II

VC

PERC I

BONGOS



TR.

1

2

3

5

4

4

3

4

Preview File Only

G

VC

B.G.

5

4

2

4

3

4

PERC.

I

II

BONGOS

TO SUS. CYM.

GONG

TO S.D.

130

CON BRIO  $\text{♩} = 112$

VC

Violin and Viola staves. The Violin staff contains a melodic line starting with a half note G4, followed by quarter notes A4, B4, and C5. The Viola staff contains a similar line starting with a half note F3, followed by quarter notes G3, A3, and B3. Dynamics markings include *p* and *pp*. Handwritten '4' and '4' are present below the staves.

ELECTRIC PIANO

Electric Piano staff. It features a melodic line with eighth notes and a bass line with quarter notes. Dynamics markings include *p*.

EL.P.

Electric Piano staff. This section includes articulation marks such as slurs and accents. Fingerings are indicated with numbers 1, 2, 3, 4, and 5. Dynamics markings include *p*.

TP

Trumpet staff. It contains a melodic line with slurs and accents. Dynamics markings include *p*.

Three staves for Trumpets 1, 2, and 3. They contain a melodic line with slurs and accents. Dynamics markings include *p*. A 'TP' marking is present above the first staff.

VC

Violin and Viola staves. The Violin staff contains a melodic line with a slur and an accent. The Viola staff contains a similar line. Dynamics markings include *p*.

EL.P.

Electric Piano staff. This section includes articulation marks such as slurs and accents. Fingerings are indicated with numbers 6 and 3. Dynamics markings include *p*.

TP I

VC

ELP

TP

*p*

3

4

[40]

TP I

VC

ELP

*pp*

2

3

4

4

[40]

Preview File Only

G

VC

BG.

FLP.

4

3

4

4

G.

VC

BG.

FLP.

G.

VC

B.G.

EL.P.

PERC. I

PERC. II

3 4  
4 4

G.

VC

B.G.

EL.P.

PERC. I

PERC. II

1  
 TP. 2  
 3

3 2  
 4 4

G.

VC

BG.

3 2  
 4 4

ELP.

PERC. I  
 II

SUB. CYN.  
 TO BONGOS

S.D.  
 P



Handwritten musical score for page 31, featuring staves for TP (Trumpet 1, 2, 3), G (Guitar), VC (Violin), BG (Bass), EL.P. (Electric Piano), and PERC II (Percussion II). The score includes musical notation, dynamics like 'p' and 'cresc.', and performance instructions such as 'MUTE OUT' and 'GRIST'. A large blue watermark 'Preview File Only' is overlaid on the page.

**TP 1**: Musical notation with a five-measure slur at the beginning. Performance instruction: **MUTE OUT**.

**TP 2**: Musical notation. Performance instruction: **MUTE OUT**.

**TP 3**: Musical notation. Performance instruction: **MUTE OUT**.

**G**: Musical notation.

**VC**: Musical notation with dynamics *fp* and *cresc.*.

**B.G.**: Musical notation with performance instruction **B.G.**.

**EL.P.**: Musical notation with a five-measure slur.

**PERC II**: Musical notation with dynamic *so.*

Handwritten numbers below the TP and BG staves: **3**, **2**, **4** in the first row; **4**, **4**, **4** in the second row.

160

TP. 1 2 3

TRB. 1 2 3

3  
4

160

G.

B.G.

EX. P.

Preview File Only