

BRITISH MUSIC INFORMATION CENTRE.

10, Stratford Place, London, W.1

N
Box

Alan Bullard

PSALM - TRIPTYCH

Words selected from the Psalms in the New
English Bible Translation

for small chamber choir
and oboe solo

Duration: 8½ mins

pp

p

WHERE SHALL I FIND HELP?

WHERE SHALL I FIND HELP?

This system contains two systems of musical notation. The top system is a vocal line with lyrics. The bottom system is a piano accompaniment. Dynamics include *pp* and *p*. The lyrics are "WHERE SHALL I FIND HELP?".

mp

p

HELP COMES ON - LY FROM THE LORD,

HELP COMES ON - LY FROM THE LORD,

This system contains two systems of musical notation. The top system is a vocal line with lyrics. The bottom system is a piano accompaniment. Dynamics include *mp* and *p*. The lyrics are "HELP COMES ON - LY FROM THE LORD,".

Musical score for the first system. The top staff is a vocal line starting with a piano (*pp*) dynamic and a fermata. The middle staff is a piano accompaniment with lyrics: "MAKER OF HEAVEN AND EARTH." The bottom staff is another piano accompaniment with lyrics: "MAKER OF HEAVEN AND EARTH." The music is in 4/4 time.

Musical score for the second system. The top staff is a vocal line starting with a piano (*pp*) dynamic and a fermata. The middle staff is a piano accompaniment with lyrics: "HOW COULD HE LET YOUR FOOT". The bottom staff is another piano accompaniment with lyrics: "HOW COULD HE LET YOUR FOOT". The music is in 4/4 time. Dynamics include *f* *con forza* and *f*. There are triplets and fermatas in the piano parts.

accel - - - -

f

YOUR RIGHT HAND;

YOUR RIGHT HAND;

YOUR RIGHT HAND;

YOUR RIGHT HAND;

YOUR RIGHT HAND;

ob.

ff

Very fast.

Slightly faster than opening

ff

The

(slightly faster than the opening)

SUN

WILL NOT STRIKE YOU BY

p *f* *con forza* *f*

maestro *ffp (n)*

SUN, *ffp (n)*

SUN, *ffp (n)*

SUN, *ffp (n)*

DAY AND THE MOON BY NIGHT, SUN

WILL NOT

mf *f* *con forza* *f*

maestro *ffp*

SUN *ffp*

SUN *ffp*

THE SUN *ffp*

WILL NOT STRIKE YOU BY

SUN

WILL NOT

BRITISH MUSIC INFORMATION CENTRE

10, Stratford Place, London, W.1

STRIKE YOU BY DAY NOR THE MOON BY NIGHT,

STRIKE YOU BY DAY NOR THE MOON BY NIGHT,

DAY NOR THE MOON BY NIGHT, NOR THE MOON BY

STRIKE YOU BY DAY NOR THE MOON BY NIGHT,

- - Slower than the opening

MOON BY NIGHT. THE LORD WILL GUARD YOU A -

MOON BY NIGHT. THE LORD WILL GUARD YOU A -

NIGHT. THE LORD WILL GUARD YOU A -

MOON BY NIGHT. THE LORD WILL GUARD YOU A -

-GAINST ALL EVIL; THE LORD WILL
 -GAINST ALL EVIL; THE LORD WILL
 -GAINST ALL EVIL; THE LORD WILL
 -GAINST ALL EVIL; THE LORD WILL

GUARD YOU, BODY AND SOUL.
 GUARD YOU, BODY AND SOUL.
 GUARD YOU, BO - DY AND SOUL.
 GUARD YOU, BO - DY AND SOUL.

Tempo primo

Musical score for the first system. It consists of five staves. The top staff is a vocal line with dynamics *p* and *pp*. The second and third staves are vocal lines with lyrics: "THE LORD WILL GUARD YOUR GOING" and "THE LORD WILL GUARD YOUR GOING". The fourth staff is a vocal line with lyrics: "IF I LIFT UP MY EYES TO THE HILLS,". The fifth staff is a piano accompaniment line with dynamics *mp* and *pp*.

Musical score for the second system. It consists of five staves. The top staff is a vocal line with dynamics *p* and *pp*. The second and third staves are vocal lines with lyrics: "AND YOUR COMING," and "AND YOUR COMING,". The fourth staff is a vocal line with lyrics: "WHERE SHALL I FIND HELP?". The fifth staff is a piano accompaniment line with dynamics *mp* and *pp*.

Musical score for the first system. It consists of five staves. The top staff is a piano accompaniment line. The second and third staves are vocal lines. The lyrics for the vocal lines are:

THE LORD WILL GUARD YOUR GOING
 THE LORD WILL GUARD YOUR GOING

The piano accompaniment includes dynamic markings: *f*, *pp*, and *mp*.

Musical score for the second system. It consists of five staves. The top staff is a piano accompaniment line. The second and third staves are vocal lines. The lyrics for the vocal lines are:

AND YOUR COMING,
 AND YOUR COMING,

The piano accompaniment includes dynamic markings: *mp* and *f*.

MA- KER OF HEAVEN AND EARTH.

Handwritten musical score for vocal parts. The lyrics are: NOW AND FOR EV-ER - MORE. The score includes dynamic markings *mf warmly* and *mf*. A large blue watermark "Preview File Only" is overlaid on the score.

NOW AND FOR EV - ER - MORE .

Handwritten musical score for a lower instrument part, possibly a cello or bass. It features dynamics *p* and *pp*. A large blue watermark "Preview File Only" is overlaid on the score.

Handwritten musical score for an upper instrument part, possibly a violin or flute. It features dynamics *f* and *mp*. A large blue watermark "Preview File Only" is overlaid on the score.

3 1/2 mins

Musical score for the first system, featuring five staves. The lyrics are:

EARTH, DANCE, O EARTH, AT THE
 EARTH, DANCE, O EARTH, AT THE
 EARTH, DANCE, O EARTH, AT THE
 EARTH, DANCE, O EARTH, AT THE

Musical score for the second system, featuring five staves. The lyrics are:

PRE-SENCE, THE PRE-SENCE OF THE LORD,
 PRE-SENCE, THE PRE-SENCE OF THE LORD,
 PRE-SENCE, THE PRE-SENCE OF THE LORD,
 PRE-SENCE, THE PRE-SENCE OF THE LORD,

f

mf

AT THE PRE-SENCE, THE PRE-SENCE, THE PRE-SENCE OF THE

mf

AT THE PRE-SENCE, THE PRE-SENCE, THE PRE-SENCE OF THE

mf

AT THE PRE-SENCE, THE PRE-SENCE, THE PRE-SENCE OF THE

mf

AT THE PRE-SENCE, THE PRE-SENCE, THE PRE-SENCE OF THE

AT THE PRE-SENCE, THE PRE-SENCE, THE PRE-SENCE OF THE

f

f

mf

mf

GOD OF JA - COB, THE GOD OF JA -

GOD OF JA - COB, THE GOD OF JA -

GOD OF JA - COB, THE GOD OF JA -

GOD OF JA - COB, THE GOD OF JA -

- COB, THE GOD OF JA - COB, JA - COB, JA - COB,
 - COB, THE GOD OF JA - COB, JA - COB, JA - COB,
 - COB, THE GOD OF JA - COB,
 - COB, THE GOD OF JA - COB,

THE GOD OF JA - COB, JA - COB, JA - COB,
 THE GOD OF JA - COB, JA - COB, JA - COB,
 LET THE HEA - VENS RE - JOICE, - THE
 LET THE HEA - VENS RE - JOICE, - THE

THE HEAVENS REJOICE, THE HEAVENS REJOICE AND THE EARTH
 THE HEAVENS REJOICE, THE HEAVENS REJOICE AND THE EARTH
 HEAVENS REJOICE, THE HEAVENS REJOICE AND THE EARTH
 HEAVENS REJOICE, THE HEAVENS REJOICE AND THE EARTH

S — EXULT, LET THE SEA ROAR,
 A — EXULT, LET THE SEA ROAR,
 T — EXULT, LET THE SEA ROAR,
 B — EXULT, LET THE SEA ROAR,

THEN LET ALL THE TREES OF THE FOREST SHOUT FOR JOY, LET ALL THE
 THEN LET ALL THE TREES OF THE FOREST SHOUT FOR JOY, LET ALL THE
 THEN LET ALL THE TREES OF THE FOREST SHOUT FOR JOY, LET ALL THE
 THEN LET ALL THE TREES OF THE FOREST SHOUT FOR JOY, LET ALL THE

TREES OF THE FOREST SHOUT FOR JOY, — FOR JOY, — — — — FOR
 Joy, SHOUT — — — — — FOR JOY, — — — — — FOR
 TREES OF THE FOREST SHOUT FOR JOY, — FOR JOY, — — — — — FOR
 Joy, SHOUT — — — — — FOR JOY, — — — — — FOR

Joy, — — — — — FOR JOY, — JOY — — — — — BE-FORE THE
 Joy — — — — — FOR JOY, — JOY — — — — — BE-FORE THE
 Joy, — — — — — FOR JOY — — — — — BE-FORE THE
 Joy, — — — — — FOR JOY — — — — — BE-FORE THE

ob. **ff**
 LORD — — — — — WHEN HE COMES TO JUDGE THE EARTH.
ff
 LORD — — — — — WHEN HE COMES TO JUDGE THE EARTH.
ff
 LORD — — — — — WHEN HE COMES TO JUDGE THE EARTH.
ff
 LORD — — — — — WHEN HE COMES TO JUDGE THE EARTH.

rit.

dim. dim. p

dim.

dim.

dim.

dim.

(rit) - - - - - molto - - - - - *lungo*

pp

Much Slower (approx. $\frac{1}{2}$)

relaxed and peaceful

p espous. *pecc*

S HE WILL JUDGE THE EARTH WITH RIGHTEOUSNESS AND THE

p espous. *pecc*

A HE WILL JUDGE THE EARTH WITH RIGHT - EOUS - NESS AND THE

p espous. *pecc*

T HE WILL JUDGE THE EARTH WITH RIGHT - EOUS - NESS AND THE

p espous. *pecc*

B HE WILL JUDGE THE EARTH WITH RIGHT - EOUS - NESS AND THE

relaxed and peaceful

Tempo I

ob. *Very expressively* *pp*

S. *pp*
PEO - PLES IN GOOD FAITH.

A. *pp*
PEO - PLES IN GOOD FAITH.

T. *pp*
PEO - PLES IN GOOD FAITH.

B. *pp*
PEO - PLES IN GOOD FAITH.

Very expressively

p *mf* *pp*

DANCE, —

DANCE, —

DANCE, —

DANCE, —

mf

p *mp*

DANCE, - DANCE, -

DANCE, - DANCE, -

DANCE, - DANCE, -

DANCE, - DANCE, -

f *f*

mf *f*

DANCE, - DANCE, -

DANCE, - DANCE, -

DANCE, - DANCE, -

DANCE, - DANCE, -

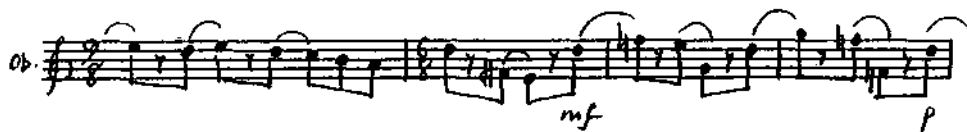
DANCE, - DANCE, -

f. dim. mf p
mp
mp.
mp
mp

O EARTH, O EARTH, AT THE PRE-SENCE OF THE
 O EARTH, O EARTH, AT THE PRE-SENCE OF THE
 O EARTH, O EARTH, AT THE PRE-SENCE OF THE
 O EARTH, O EARTH, AT THE PRE-SENCE OF THE

p
p
p
p

LORD.
 LORD.
 LORD.
 LORD.



2½ mins.

BRITISH MUSIC INFORMATION CENTRE
10, Stratford Place, London, W.1

III

from Psalm 23

Moderato (♩ = c. 76)

Flute part with dynamics: *p espress.*

Oboe part with dynamics: *p*

calmly & smoothly

Vocal parts (Soprano, Alto, Tenor, Bass) with lyrics:

S	THE	LORD IS MY	SHEPHERD; I
A	THE	LORD	IS MY
T	THE	LORD IS MY	SHEPHERD; I
B	THE	LORD	IS MY.

calmly & smoothly

Oboe part with dynamics: *p*

Vocal parts (Soprano, Alto, Tenor, Bass) with lyrics:

S	SHALL — WANT	NOTHING.	HE MAKES
A	SHEPHERD; I	SHALL — WANT	NOTHING.
T	SHALL — WANT	NOTHING.	HE MAKES
B	SHEPHERD; I	SHALL — WANT	NOTHING.

ME LIE DOWN IN GREEN, GREEN
 HE MAKES ME LIE IN GREEN PAS -

poco cresc.

poco cresc.

poco cresc.

poco cresc.

poco cresc.

PAS - TURES, AND LEADS ME BE - SIDE THE
 -TURES, AND LEADS ME BE - SIDE THE
 -TURES, AND LEADS ME BE - SIDE THE
 -TURES, AND LEADS ME BE - SIDE THE

pp

pp

pp

pp

rit - - - - - a tempo

WA - TERS OF PEACE;
WA - TERS OF PEACE;
WA - TERS OF PEACE;
WA - TERS OF PEACE;

p

This system contains four staves. The top staff is a piano accompaniment with a dynamic marking of *p*. Below it are three vocal staves, each with the lyrics "WA - TERS OF PEACE;". The music is in a key with one sharp (F#) and a 4/4 time signature. The tempo marking "rit - - - - - a tempo" is at the top.

f

This system contains a single staff for an oboe. The music is in a key with one sharp (F#) and a 4/4 time signature. The dynamic marking *f* is at the bottom right.

f marcato
mf
mf
f
mf

EVEN THOUGH I WALK THROUGH A VALLEY DARK - AS DEATH

This system contains five staves. The top staff is for oboe with a dynamic marking of *f marcato*. The second staff is for saxophone with a dynamic marking of *mf*. The third staff is for trumpet with a dynamic marking of *mf* and the lyrics "EVEN THOUGH I". The fourth staff is for trombone with a dynamic marking of *f* and the lyrics "WALK THROUGH A VALLEY DARK". The fifth staff is for bass with a dynamic marking of *mf* and the lyrics "EVEN THOUGH I WALK THROUGH A VALLEY DARK - AS DEATH".

(f) *mp serene and expressive*

FEAR NO EVIL, FOR

WALK THROUGH A VALLEY DARK AS DEATH, VALLEY DARK AS

AS DEATH, VALLEY DARK AS DEATH, VALLEY DARK AS

DARK AS DEATH THROUGH A VALLEY DARK AS DEATH,

f

THOU ART WITH ME, THY STAFF AND

DEATH, DARK AS DEATH, THY STAFF AND THY

DEATH, DARK AS DEATH, THY STAFF AND THY

DARK AS DEATH, DARK AS DEATH, THY STAFF AND THY

relaxed

THY CROOK ARE MY COMFORT.

mf CROOK ARE MY COMFORT.

mf CROOK ARE MY COMFORT.

mf CROOK ARE MY COMFORT.

CROOK ARE MY COMFORT.

rit - - - - *molto* - - - - *a tempo*

p calmly

GOODNESS AND

p calmly

GOODNESS AND

LOVE - UN - FAILING, THESE WILL FOLLOW ME - ALL THE
p *calmly* *poco cresc.*

GOODNESS AND LOVE - UN - FAILING, THESE WILL FOLLOW ME - ALL THE
poco cresc.

LOVE - UN - FAILING, THESE WILL FOLLOW ME - ALL THE
p *calmly* *poco cresc.*

GOODNESS AND LOVE - UN - FAILING, THESE WILL FOLLOW ME - ALL THE

DAYS - OF MY LIFE, AND I SHALL DWELL

ALL THE DAYS - OF MY LIFE, AND

DAYS - OF MY LIFE, AND I SHALL DWELL

ALL THE DAYS - OF MY LIFE, AND

IN THE HOUSE OF THE LORD, THE HOUSE OF THE *dim.* HOUSE OF THE

I SHALL DWELL IN THE *dim.* HOUSE OF THE

IN THE HOUSE OF THE LORD, THE HOUSE OF THE *dim.* HOUSE OF THE

I SHALL DWELL IN THE *dim.* HOUSE OF THE

rit. - - - *molto.* - - *a tempo.* - rit. - - -

LORD MY WHOLE LIFE

LORD MY WHOLE LIFE

LORD MY WHOLE LIFE

LORD MY WHOLE LIFE

a tempo *rit.*

p *pp*

LONG. LONG. LONG. LONG. LONG.

2 1/2 mins.

March 1986

Total duration: 8 1/2 mins

Details of all Alan Bullard's music
from

11 CHRIST CHURCH COURT
IRETON ROAD
COLCHESTER
ESSEX CO3 3AU

TEL: COLCHESTER 562607