

Shaded Glass

For Four Sopranos

Matthew Lomax

Shaded Glass

For Four Sopranos

Duration 5'00"

Matthew Lomax

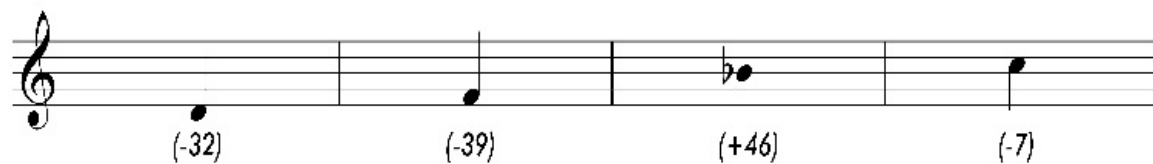
shades parsed
frayed glass stained rocks
quakes past stone
greyed backs fade raw

Performer's Note

Intonation

Shaded glass makes use of non-standard tuning. The number above a note indicates in cents its deviation from the notated pitch (e.g. G-flat +7 is slightly higher than a regular G-flat)

The intervals between each step of the scale are all the same, roughly 146 cents (i.e a semitone and a half)



To attain these pitches, singers are given a set of four notes in an app created for this piece (see 'App'). These pitches are essentially virtual tuning forks and are to be used during performance through headphones. Shaded glass has been written so that singers mostly really on each for reference pitches, the app is there to help with the rest.

App

To set up the tuning fork app, follow the instructions below:

- Install the app 'MobMuPlat'
- Download the zip file 'Shaded Glass [MLomax]' (contact enquiries@matthewlomax.com)
- Tap on the file, you should be prompted to open the file via MobMuPlat.
- The app should then be located in MobMuPlat's files on opening.

Score Prep

Before binding, it is recommended that the bottom of pages 2-7 are cut off.

Indicated by a dashed line on page 2, this is so that the phone app can be placed on the music stand and be part of the score (only possible if larger than A4).

Shaded Glass

For Four Sopranos

Matthew Lomax

♩=58

ppp *p* *pp sub.*

Soprano 1 shades par sed, frayed glass stained rocks, quakes past stone,

ppp *p* *pp sub.*

Soprano 2 shades parsed, frayed glass stain - ed rocks, quakes

ppp *p* *pp*

Soprano 3 shades parsed, frayed glass

ppp *p* *pp sub.*

Soprano 4 sha (ae) des par

4

p *pp* *p* *mfpp*

shades parsed, frayed glass, stained rocks, past stone

p *pp* *p* *pp*

past stone, shades par-sed, frayed glass stained rocks, quakes past stone

p *pp*

stained rocks quake past stone, quakes past stone, past stone

p *pp* *p* *pp*

sed, frayed glass stained rocks

A

9

shades _____ parsed _____ shades _____ parsed _____ shades _____ parsed _____

shades _____ parsed _____ shades _____ parsed _____ shades _____ parsed _____

shades _____ parsed _____ shades _____ parsed _____ shades _____ parsed _____

shades _____ parsed _____ shades _____ parsed _____ shades _____ parsed _____

B

16

shades _____ parsed _____ , frayed _____

sha - des parsed _____ frayed _____ glass

shades par - sed, frayed _____ glass shades _____ parsed _____ frayed

shades par - sed, frayed _____ glass shades _____ parsed _____ frayed

22 *p* *ppp* *ppp*

frayed _____ gla - - ss shades _____

p *ppp sub.* *mfpp* *ppp*

shades parsed _____ frayed _____ gla - ss

p *ppp sub.* *mfpp* *p*

glass, shades _____ parsed _____ gla - - - ss, shades parsed_ frayed_

p *ppp* *mfpp*

glass, shades _____ parsed _____ frayed glass, frayed gla - - ss, shades parsed_ frayed_

28 *mfpp* *p*

_parsed, frayed glass _____ stain - ed rocks , frayed _____ glass _____ stained _____ rocks,

p *pp* *mfpp* *p*

shades _____ parsed frayed _____ glass _____ stained rocks, frayed _____ glass stained rocks _____

pp *p* *pp* *mfpp* *p*

_____ glass _____ stained _____ rocks _____ quake _____ past stone greyed _____ backs

p *pp* *mfpp* *p*

_____ glass _____ stained _____ rocks _____ quake _____ past stone greyed _____ backs

34 *mf* *ppp* *p* *ppp* *p* *ppp*

raw_ parsed fray - ed, gla - - ss stained_ ro-

mf *ppp* *p* *ppp*

raw_ rocks quake_ pa - - st stone_ , greyed_ ba-

mf *ppp* *mfpp* *ppp*

raw_ rocks quake_ past_ stone_ , greyed_ glass_

mf *ppp* *p* *pp sub.* *ppp*

raw_ shades fray - ed, glass_ stained_ rocks_ quake past_

39 *p* *mf* *pp*

- - cks, rocks_ quake past_ stone_ , greyed_ backs fade_

p *mf* *pp*

- - cks, frayed_ glass_ stained_ rocks_ quake past_ stone_

p *pp* *mf*

- stain_ frayed_ glass_ stained_ rocks_ quake_ past_ stone

p *pp* *mf*

- sto - nes, rocks_ quake_ past_ stone , greyed_ backs_ fade

E

43 *ppp*

shades parsed glass stained rocks

rocks quakes past stone, greyed

48 *mfpp* *ppp* *mfpp* *ppp*

shades shades

quakes past stone, shades parsed frayed glass stained rocks,

backs fade raw, stained rocks quakes past stone, greyed backs,

F

55 *p* *mfpp* *p* *pp*

shades_ parsed_ , frayed_ glass_ stained_ rocks_

p *mfpp* *p* *pp* *p*

shades_ parsed, frayed glass stained_ ro - - cks,

p *mfpp* *p* *pp* *p*

shades_ parsed_ , frayed_ shades_ glass stained_ ro - cks,

p *mfpp* *p* *pp* *p*

shades_ parsed, frayed glass stained_ ro - cks,

G

54 *p* *mf* *p* cut off!

, glass_ stained_ rocks_ quakes_ pa - st,

p

frayed_ glass_ stained_ rocks_ quake past_

mf *p* cut off!

quakes past_ stone, greyed_ backs fade_ raw_ ,

p

quake past

60

frayed glass stained rocks quakes past stone

stone , shades

frayed glass stained rocks quakes past , shades

stone greyed backs , frayed glass stained rocks quake past stone,

H

65

shades parsed, shades

parsed, shades sha

parsed sha - des sha - - - des

shades par - - - sed sha - - - - des

72

pp *ppp*

sha - - - - des shades

pp *ppp*

- - - des shades shades parsed

pp

shades shades

pp

shades shades

81

p ppp p pp

shades par - sed, frayed glass backs , fade raw.

p ppp p pp

shades parsed, frayed glass backs fade raw.

ppp p pp sub. p ppp p pp

sha - des par - sed, frayed glass backs fade raw.

ppp p pp sub. p ppp pp

sha - des par - sed, frayed glass backs fade raw.