

**James  
Iliff**

**Song to the  
Lycopodiales**

for  
solo double bass



**Song to the  
Lycopodiales**

for  
solo double bass

**James  
Iliff**

The Lycopodiales\* form a very ancient, quite distinct group of plants that once included huge trees of the swamp forests from which we get coal. The group survives, very greatly reduced both in extent and size, in the so-called Clubmosses. A few of these are native and are occasionally to be found on our nearby moor. These are a concern both to the dedicatee and myself.

The middle section of the piece attempts to convey the wonderful interval of the two-note hooter on the old diesel trains of the Central Wales Line, which still seems to linger in the landscape. I really did once hear a driver use it to play “Ilkley Moor”.

\* This name has six syllables: Lycopodialès

Performance note

An accidental above a note indicates a pitch higher or lower than that written by a quarter tone.

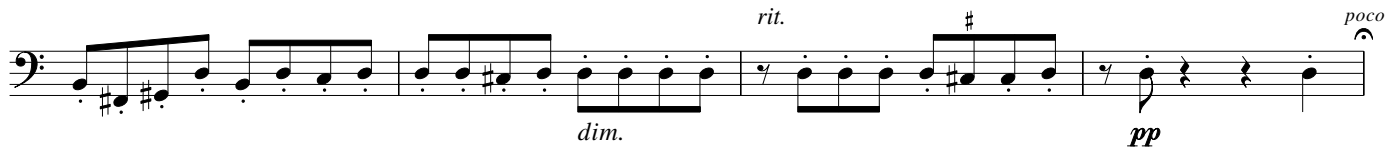
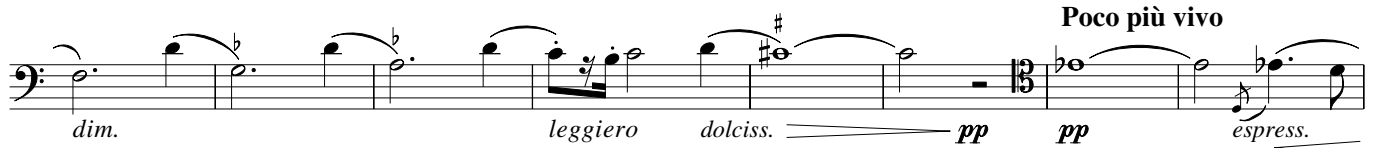
for Chris Cheffings

# SONG TO THE LYCOPODIALES

for solo double bass

James Iliff

**Poco lento e cantabile**



**Tempo 1°**

