

David Cooper

Histories of the Night

A song cycle for Soprano and Piano

Composed for Deborah Brussel

1. Counting The beats

Comodo

mf1: You, love and I, (He whispers) You and I, and if no more than
2: Not here but there, (He whispers) only - there as we are, here, to-

9 Poco meno mosso

an-ly you and I what care you and I? counting the beats, counting the
-gether, now and here, al-ways you and I

8ve -

slow heart beats, the bleeding to death of time in Slow heart beats, wakeful they lie.

2nd time
to coda

Crystalline

mp cloudless day - , night, and a cloudless day -

p

Piu Mosso, agitato

f yet the huge storm will burst upon their heads one day

f

from a bit-ter sky. *mp* where shall we be, (he whis pers)

p

sempre con ped.

where shall we be, when death strikes home, O where then shall we be who were you and I?

Handwritten musical notation for piano accompaniment, featuring chords and melodic lines in both hands. Includes markings such as *3 7* and *7 9 11*.

Gda

wake-ful they lie.

Handwritten musical notation for piano accompaniment, including the instruction *delicatiss* and dynamic markings *#p*.

2. Like Snow

Non Troppo Allegro (♩ = c 60)

mp

She, then, like snow

mp legato

in a dark night, fell se-cret-ly. And the world waked with daz-zling of the drossy eye,

sf *sostenuto*

legato

so that some muttered 'Too much light', and drew the curtains close.

crescendo sempre

Come l'inizio

Handwritten musical notation on a single staff. It begins with a treble clef and a 3/4 time signature. The first two measures are empty. The third measure contains a half note G4 with a flat sign (G^b) and a half note B4 with a flat sign (B^b). Above the B^b note is the word "Poco" with a hairpin crescendo symbol. Below the notes is the text "like snow,".

Handwritten musical notation for a piano accompaniment. It consists of two staves: a treble clef staff and a bass clef staff. The treble staff starts with a treble clef and a 3/4 time signature. It features a series of sixteenth-note chords in the first measure, followed by a half note G^b and a half note B^b in the second measure. The bass staff starts with a bass clef and a 3/4 time signature. It contains a whole note chord with G^b and B^b in the first measure, and a half note G^b and a half note B^b in the second measure. The word "sostenuto" is written between the staves. There are also some handwritten markings like "7" and "P" above the notes.

Handwritten musical notation on a single staff. It features a treble clef and a 3/4 time signature. The melody consists of eighth and quarter notes. The lyrics are: "warmer than fingers feared, and to soil friendly; holding the his-tories of the night". There are some handwritten markings like "3 7" above the notes.

Handwritten musical notation for a piano accompaniment. It consists of two staves: a treble clef staff and a bass clef staff. The treble staff has a treble clef and a 3/4 time signature. It features a series of chords and notes. The bass staff has a bass clef and a 3/4 time signature. It contains a whole note chord with G^b and B^b in the first measure, and a half note G^b and a half note B^b in the second measure. There are some handwritten markings like "3" and "7" above the notes.

Handwritten musical notation on a single staff. It features a treble clef and a 3/4 time signature. The melody consists of eighth and quarter notes. The lyrics are: "in yet un-mel-ted tracks." There are some handwritten markings like "3 7" above the notes.

Handwritten musical notation for a piano accompaniment. It consists of two staves: a treble clef staff and a bass clef staff. The treble staff has a treble clef and a 3/4 time signature. It features a series of chords and notes. The bass staff has a bass clef and a 3/4 time signature. It contains a whole note chord with G^b and B^b in the first measure, and a half note G^b and a half note B^b in the second measure. The text "poco rit..." is written below the notes.

3. Ecstasy of Chaos

Adagio, con espressione

Handwritten musical score for the first system. It consists of two staves: a piano part on the left and a violin part on the right. The piano part begins with a treble clef and a 5/4 time signature. The violin part starts with a treble clef and a 5/4 time signature. The system contains four measures. The first measure has a dynamic marking of *ff*. The second measure has *mp* and *15ve*. The third measure has *ff* and *pp*. The fourth measure has *mp* and *pp*. There are various musical notations including notes, rests, and slurs.

Handwritten musical score for the second system, featuring a vocal line. The staff has a treble clef and a 4/4 time signature. The lyrics are: "when the im-mense dragg'd un-i-verse explodes". The dynamic markings are *mp*, *intenso*, and *cresc*. The system contains four measures.

Handwritten musical score for the third system. It consists of two staves: a piano part on the left and a violin part on the right. The piano part begins with a treble clef and a 4/4 time signature. The violin part starts with a treble clef and a 4/4 time signature. The system contains four measures. The piano part has complex chordal structures with many accidentals. The violin part has a melodic line with some accidentals.

Handwritten musical score for the fourth system, featuring a vocal line. The staff has a treble clef and a 4/4 time signature. The lyrics are: "in a cas cade of un-en-durable colour And leaves us gas-ping naked,". The dynamic markings are *sfz*. The system contains four measures.

Handwritten musical score for the fifth system. It consists of two staves: a piano part on the left and a violin part on the right. The piano part begins with a treble clef and a 4/4 time signature. The violin part starts with a treble clef and a 4/4 time signature. The system contains four measures. The piano part has complex chordal structures with many accidentals. The violin part has a melodic line with some accidentals. Dynamic markings include *sfz* and *molto*.

This system contains the first line of handwritten musical notation. The vocal line is in treble clef with a 3/4 time signature. The lyrics are: "simple this is no more than an ecstacy of chaos :". The piano accompaniment is in bass clef with a 4/4 time signature. There are dynamic markings including a piano (*p*) and a fortissimo (*ff*).

This system shows the piano accompaniment for the first system. It consists of two staves: a treble clef staff and a bass clef staff. The time signature is 4/4. The music features chords and a melodic line in the right hand. There are dynamic markings including piano (*p*) and fortissimo (*ff*).

This system contains the second line of handwritten musical notation. The vocal line is in treble clef with a 7/4 time signature. The lyrics are: "Livia hold fast, — with both hands to that roy-al love which a — lone ,". The piano accompaniment is in bass clef with a 4/4 time signature. There are dynamic markings including piano (*p*) and fortissimo (*ff*).

This system shows the piano accompaniment for the second system. It consists of two staves: a treble clef staff and a bass clef staff. The time signature is 4/4. The music features chords and a melodic line in the right hand. There is a dynamic marking of *cresc.* (crescendo).

This system contains the third line of handwritten musical notation. The vocal line is in treble clef with a 3/4 time signature. The lyrics are: "which we know certainly , re — stores fragment a tim in to true be — ing". The piano accompaniment is in bass clef with a 4/4 time signature. There are dynamic markings including piano (*p*) and fortissimo (*ff*).

This system shows the piano accompaniment for the third system. It consists of two staves: a treble clef staff and a bass clef staff. The time signature is 4/4. The music features chords and a melodic line in the right hand. There is a dynamic marking of *lozo! p*.

Ped al fine



Scherzando 4. Birth of Angels

$\underline{f} = \underline{f}$

9/16 3/8

p delicato

2/4 3/8

mp ne ver was so pro- found a shadow thrown on earth as by your *crescendo*

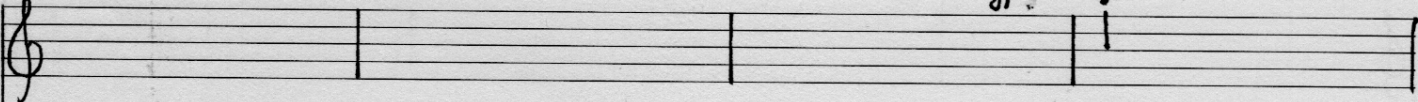
mp

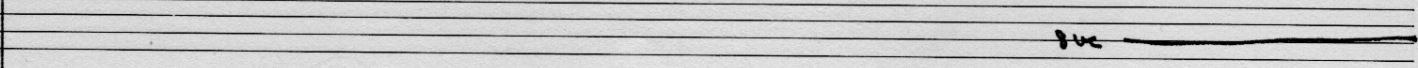

Meno mosso

sun:


mp a black roudel har-bour-ing an un-heard-of gen-er
Cresc sempre

-a-tim fledged by the sun a-blaze a-bore your own
sempre cresc e poco accel

ff. *tr.* 
Wild —

tr. 


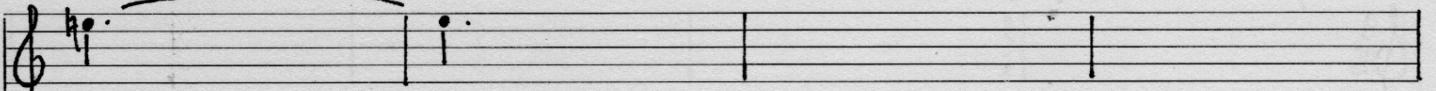
tr. 
— beyond words — yet each



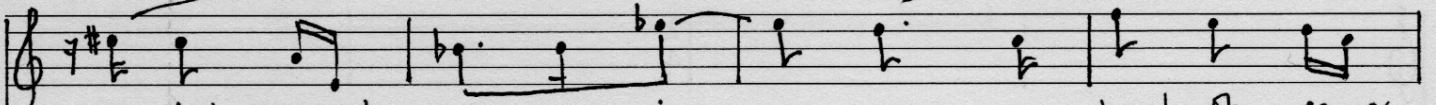

of them an an — gel.



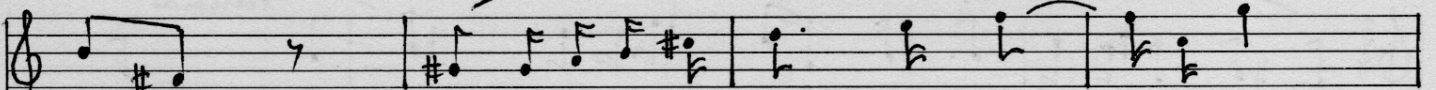
Meno mosso



sun :

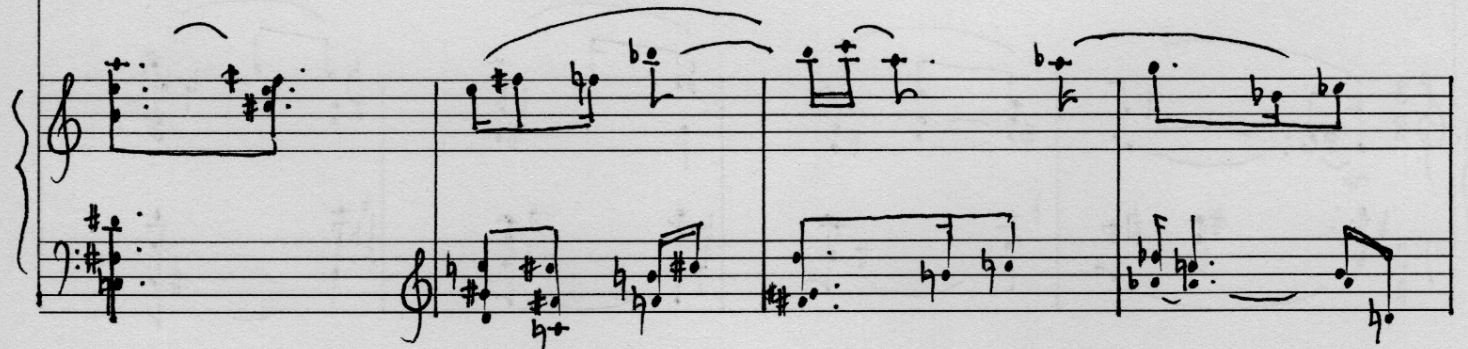


mp a black roudel har - bour - ing an un - heard - of gen - er
Cresc sempre



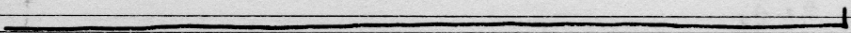
- a - tim fledged by the sun a - blaze a - bore your own

sempre cresc e poco accel



Empty treble clef staff with a double bar line at the end.

Handwritten musical notation for the first system. It consists of two staves. The upper staff is in treble clef and contains a half note G4, a quarter note A4, and a quarter note B4, all beamed together. The lower staff is in bass clef and contains a half note G3, a quarter note A3, and a quarter note B3, all beamed together. The word "delicatiss" is written above the lower staff. There are also some handwritten notes and symbols, including a sharp sign and a flat sign, scattered around the staves.

Ped 

5. Ours is no Wedlock

Andante

Handwritten musical score for the piece "Ours is no Wedlock". The score is written in treble and bass clefs with a 3/4 time signature. It includes piano accompaniment and a vocal line. The tempo is marked "Andante".

The score is divided into several systems:

- System 1:** Piano introduction. Treble clef staff shows chords and melodic fragments. Bass clef staff shows a rhythmic accompaniment. Dynamics include *p* and *sonor*. Time signatures change from 3/4 to 2/4 and back to 3/4.
- System 2:** Vocal entry. Treble clef staff contains the vocal line with lyrics: "ours is no wed-lock nor could ever be". Dynamics include *mp*. The piano accompaniment continues in the bass clef staff. Performance instructions include *intenso ma non molto crescendo*.
- System 3:** Piano accompaniment. Treble clef staff shows complex chordal textures. Bass clef staff shows a rhythmic accompaniment. Dynamics include *pp* and *pp*. A *cresc.* marking is present.
- System 4:** Vocal line. Treble clef staff contains the vocal line with lyrics: "We are more, dear heart, than free". Dynamics include *(pura) non molto vibrato*. Time signatures change from 3/4 to 2/4 and back to 3/4.
- System 5:** Piano accompaniment. Treble clef staff shows complex chordal textures. Bass clef staff shows a rhythmic accompaniment. Dynamics include *pp*.

Handwritten musical score for the first system. The vocal line is in treble clef with a 2/4 time signature. The lyrics are: "e - vil sur - rounds us - love be our eye wit - ness". The music features a melodic line with a fermata over the first measure and a 3/4 time signature change in the second measure. The piano accompaniment is in bass clef with a 2/4 time signature. The dynamic marking "p in f" is written below the piano part.

Handwritten musical score for the second system. The piano part continues with complex chordal textures and arpeggiated figures. The vocal line is not present in this system. The piano part includes a 3/4 time signature change and various chord voicings.

Handwritten musical score for the third system. The vocal line is in treble clef with a 2/4 time signature. The lyrics are: "yet while a first child to - gether - ness still liars this mag - ic,". The music features a melodic line with a fermata over the first measure and a 3/4 time signature change in the second measure.

Handwritten musical score for the fourth system. The piano part continues with complex chordal textures and arpeggiated figures. The vocal line is not present in this system. The piano part includes a 3/4 time signature change and various chord voicings.

Handwritten musical score for the fifth system. The vocal line is in treble clef with a 2/4 time signature. The lyrics are: "all ter - ror of lies fades from our still in - domitable eyes". The music features a melodic line with a fermata over the first measure and a 3/4 time signature change in the second measure. The dynamic marking "sempre crescendo" is written below the piano part.

Handwritten musical score for the sixth system. The piano part continues with complex chordal textures and arpeggiated figures. The vocal line is not present in this system. The piano part includes a 3/4 time signature change and various chord voicings.

Handwritten musical notation on a single staff. The lyrics "We love" are written below the notes. A *crescendo* marking is present below the staff.

Handwritten musical notation for piano accompaniment, consisting of two staves. The word *crescendo* is written between the staves.

Handwritten musical notation on a single staff. The lyrics "and none dares gibe at our excess" are written below the notes. A *ff* (fortissimo) marking is present at the beginning.

Handwritten musical notation for piano accompaniment, consisting of two staves. A *ff* marking is present at the beginning.

Ped at fine