

Steve Gisby

Compound Melodies

open orchestration (solo or ensemble)

2017

Performance Notes:

Compound Melodies can be performed solo, or by an ensemble of any size and instrumentation.

If performed by more than one person, the melodies can be in unison, or doubled (or more) in successive octaves in either direction. The piece can be transposed as necessary, to suit the given instrument/s.

The dynamic level and tempo are left open. As a guide, at 90 bpm (quarter notes), the piece will last for seventeen and a half minutes.

Steve Gisby
February, 2017.

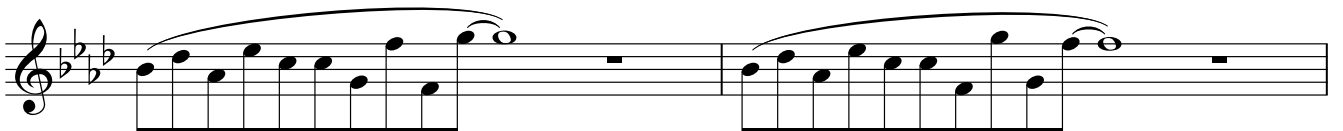
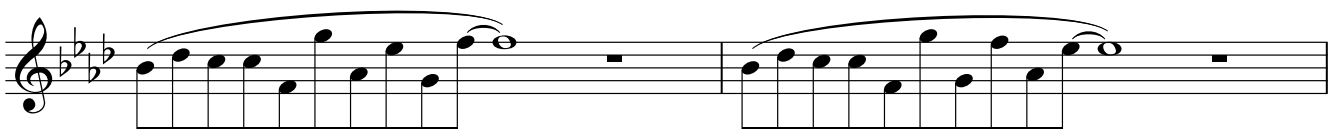
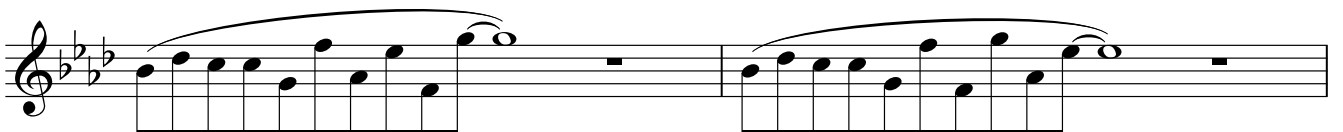
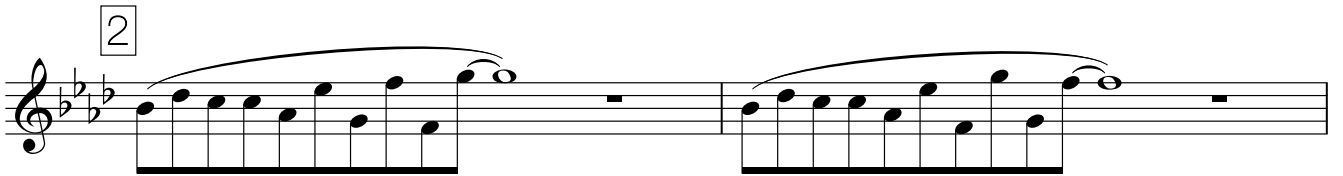
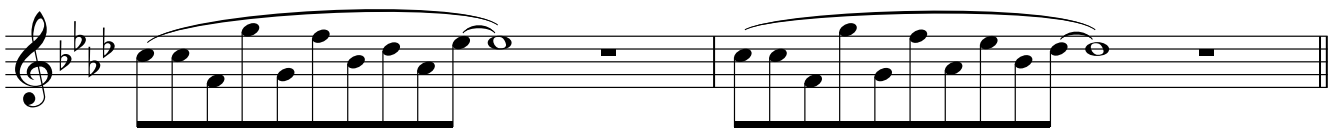
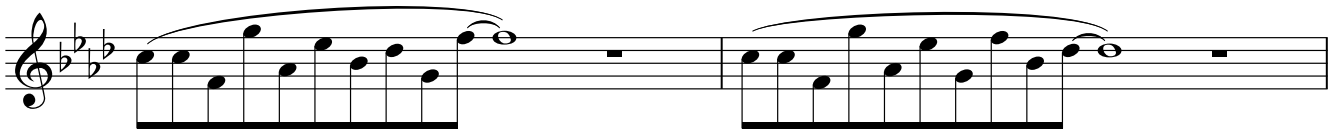
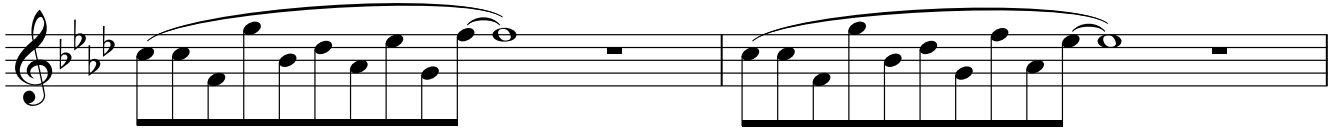
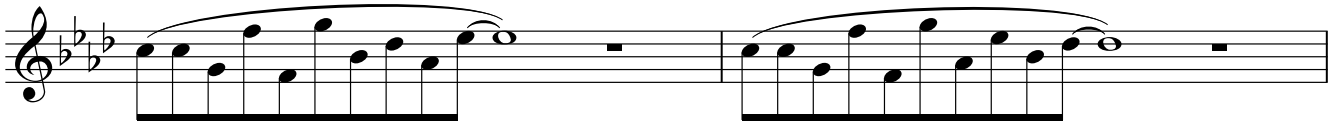
steve@stevegisby.com
www.stevegisby.com

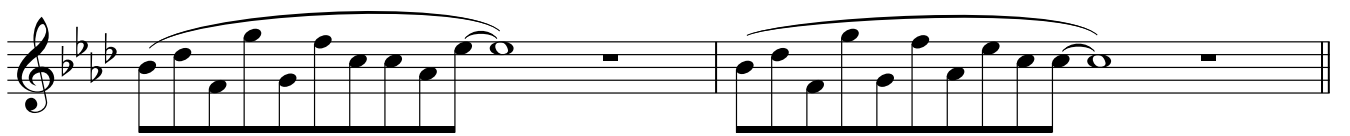
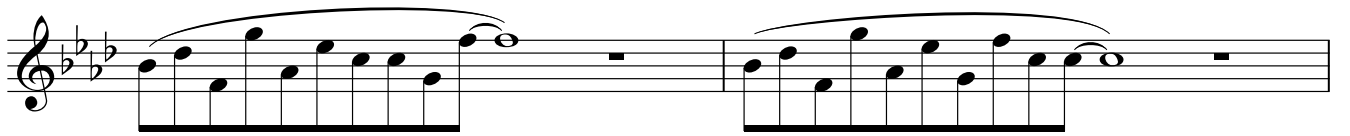
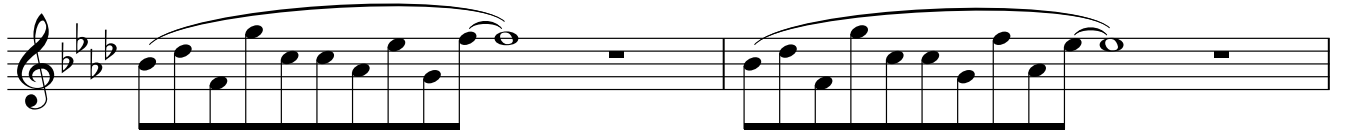
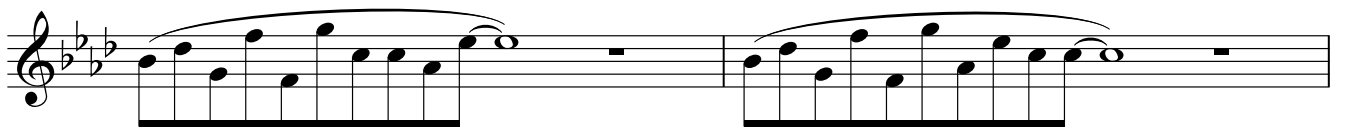
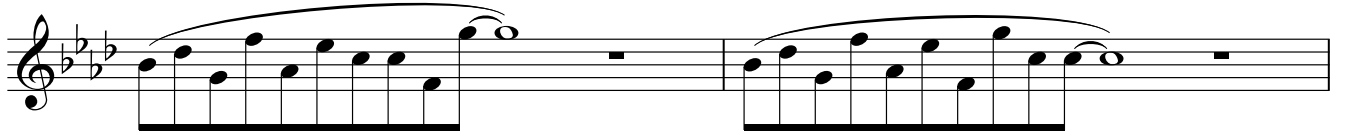
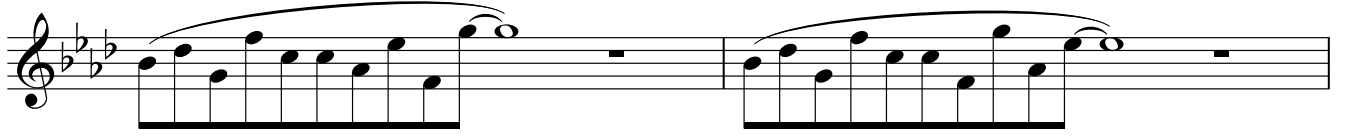
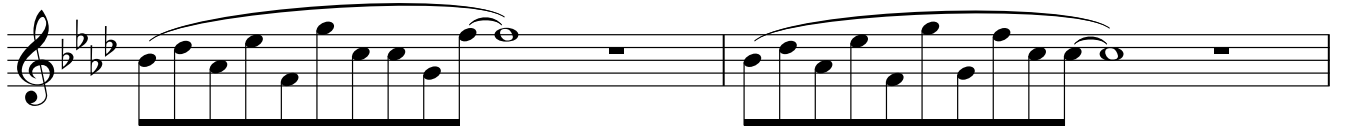
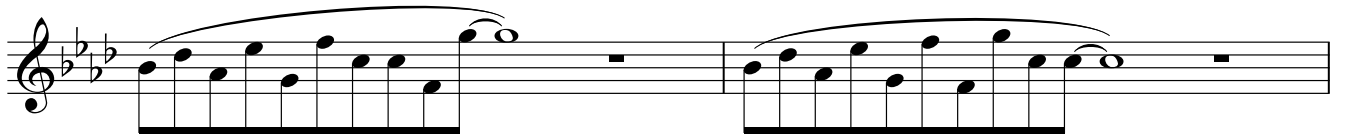
Compound Melodies

Steve Gisby
(2017)

1

Sheet music for 'Compound Melodies' by Steve Gisby (2017). The piece is written in treble clef, 3 flats (B-flat, E-flat, A-flat), and common time. It consists of eight identical staves. Each staff begins with a box containing the number '1'. The melody is composed of two measures per staff. The first measure contains a melodic line of eighth notes (G4, A4, B-flat4, C5, B-flat4, A4, G4, F4) beamed together, with a slur above and a fermata over the final note. The second measure contains a whole rest.





3

