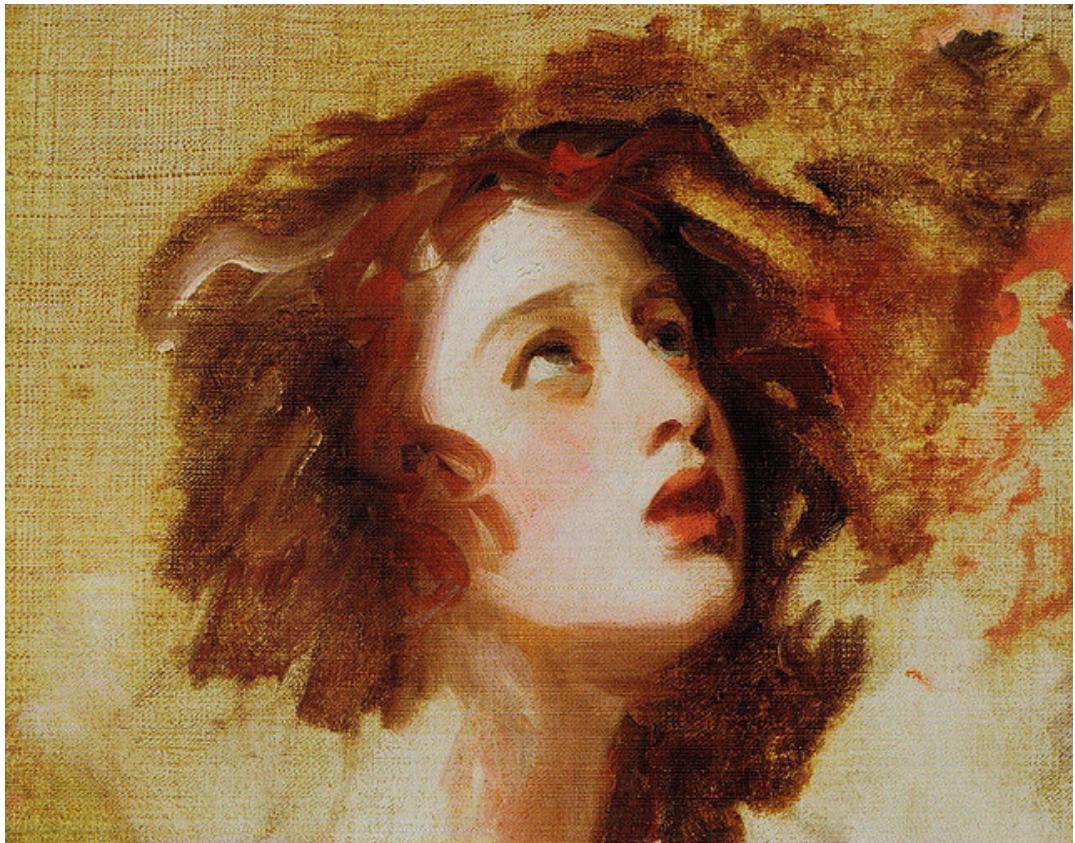


JANET BEAT
MIRANDA'S
ENCHANTED
ISLAND (2019)

for mezzo-soprano, percussion & piano



Cover picture: George Romney, Sketch of Miranda

NOTES

Mezzo-soprano
Percussion
1 maraca
medium size triangle
glass wind chime
brass wind chime
wood wind chime
3 x suspended cymbals: 12" 14", 16"
2 tam tams 14", 16"
flexatone
crotales
glockenspiel
vibraphone
xylophone,
marimba
piano

All trills begin on the upper note

tr
◐ Swirl the maraca, do not shake

The singer must use two different vocal qualities: a darker one one for Caliban and a lighter one one for Miranda.

hiss Hiss vehemently for the whole bar

* Execute as the trillo, ie. the goat's trill. as in Monteverdi . End with a grupetto.

The texts are taken from:
Shakespeare's "The Tempest": WS,
Francis Bacon's "New Atlantis" (1647): FB,
with some linking text and passages of vocalise by the composer: JB.

JB Miranda, where are you?

WS This island is full of noises, strange sounds and sweet melodies that make you feel good.

JB O wonder!

FB Divers instruments of music likewise to you unknown, some sweeter than any you have together with bells and rings that are dainty and sweet. ...we make divers tremblings and warblings

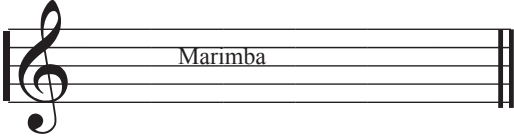
JB O wonder!

WS How many goodly creatures are there here!
How beauteous mankind is! O brave new world,
That has such people in't.
We are such stuff
As dreams are made on: and our little life
Is rounded with a sleep


Duration: c. 11'15"

Percussion Layout

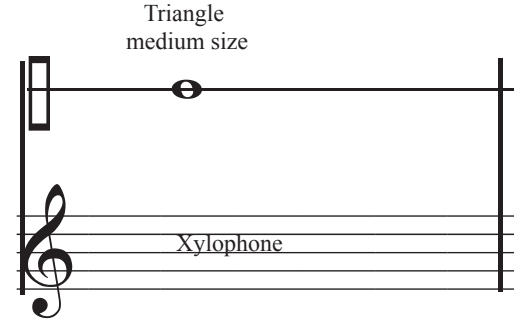
Percussion 1



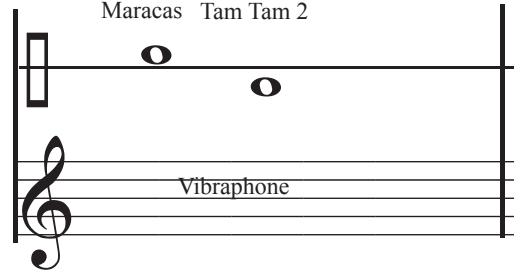
Percussion 2



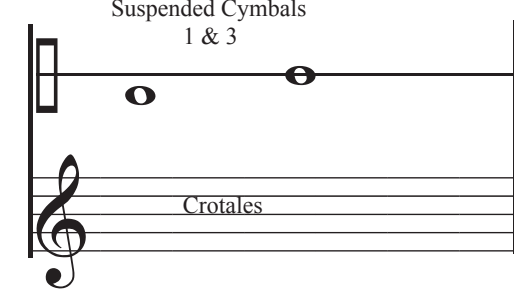
Percussion 3



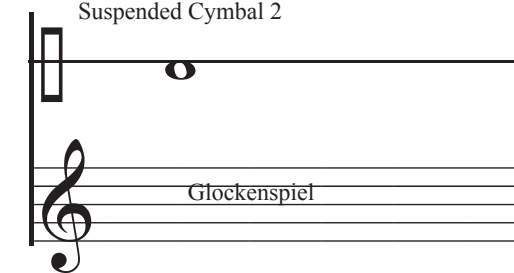
Percussion 4



Percussion 5



Percussion 6



Detailed description: The image shows a percussion layout for six different percussionists. Each percussionist has a staff with a clef and notes indicating the instruments they play. Percussion 1 has a treble clef and plays the Marimba. Percussion 2 has a square clef and plays Glass Wind Chimes, Wood Wind Chimes, Brass Wind Chimes, Tam Tam 1, and Flexatone. Percussion 3 has a square clef and plays Triangle medium size and Xylophone. Percussion 4 has a square clef and plays Maracas, Tam Tam 2, and Vibraphone. Percussion 5 has a square clef and plays Suspended Cymbals 1 & 3 and Crotales. Percussion 6 has a square clef and plays Suspended Cymbal 2 and Glockenspiel.

Miranda's Enchanted Island (2019)

Moderato misterioso (♩ = c. 120)

Janet Beat

The score is for a 4/4 piece in a moderate, mysterious tempo. It features a variety of percussion instruments and piano accompaniment. The instruments listed are:

- Percussion 1: Marimba
- Percussion 2: Wind Chimes, Flexaton, Tam Tam 1
- Percussion 3: Triangle, Xylophone
- Percussion 4: Maraca, Tam Tam 2, Vibraphone
- Percussion 5: Suspended Cymbals 1 & 3, Crotales
- Percussion 6: Suspended Cymbal 2, Glockenspiel
- Mezzo-Soprano
- Piano

Key performance instructions include:

- Glass Wind Chimes:** *mp* *lv* (mezzo-piano, *l.v.*)
- Vibraphone:** *p* *leo.* (piano, *leo.*), *motor on*, ***, *leo.*
- Piano:** *mp* (mezzo-piano), *White note cluster play with palm of hand*, *15^{ma}* (15th measure), *leo.*, ***

A

Perc 1
Mar

Perc 2
Wch
Flex
TT1

Tri

Perc 3
Xylo

Mara
TT2

Perc 4
Vib

SC 1
& 3

Perc 5
Cro

SC 2

Perc. 6
Glock

M-Sop.

Pno.

Wood Wind Chimes

Brass Wind Chimes

p *lv* *mp* *p*

written pitch

p *lv*

CALIBAN *p* *<* *mf* *>* *p* MIRANDA *p* *<* *mf*

Mir - an - da. Ah, ah, ah, ah, ah. ah,

White note cluster play with palm of hand

p

15^{ma}

Red. *

17

Perc 1
Mar

Perc 2
Wch
Flex
TT1

Tri

Perc 3

Xylo

Mara
TT2

Perc 4
Vib

SC 1
& 3

Perc 5
Cro

SC 2

Perc. 6
Glock

M-Sop.

Pno.

lv

motor off

mf

mp

lv

f *mp*

portamento

ah..

p

White note cluster play
with palm of hand

15^{ma}

♩

*

B

24

Perc 1
Mar

mp *p*

Wood Wind
Chimes

24

Perc 2
Wch
Flex
TT1

mf *lv*

24

Tri

Perc 3

Xylo

mp *p*

24

Mara
TT2

Perc 4
Vib

mp *p*

SC 1
& 3

Perc 5
Cro

24

SC 2

Perc. 6
Glock

24

M-Sop.

CAL. *mp*

Mir

24

Pno.

mp

White note cluster play
with palm of hand

15^{ma}

Red. *

30

Perc 1
Mar

p *mf*

Perc 2
Wch
Flex
TT1

30

Tri

Perc 3
Xylo

p *mf*

Mara
TT2

Perc 4
Vib

p *mf*

SC 1
& 3

Perc 5
Cro

30

SC 2

Perc. 6
Glock

30 *mf* *p*

M-Sop.
an - da,

30

Pno.

Musical score for Percussion 1-6, M-Sopranos, and Piano. The score is in 4/4 time and features a key signature of one flat (B-flat). The percussion parts include Maracas (Perc 1), Whistle/Flexa/Tambourine 1 (Perc 2), Triangle (Perc 3), Maracas/Tambourine 2 (Perc 4), Congas (Perc 5), and Glockenspiel (Perc 6). The M-Sopranos part includes the lyrics: "Mir - an - da, where are you?". The Piano part features a melodic line in the right hand and a bass line in the left hand, both starting at measure 36. Dynamics include *mf* and *f*.

41

Perc 1
Mar

Perc 2
Wch
Flex
TT1

Perc 3
Tri
Xylo

Mara
TT2

Perc 4
Vib

SC 1
& 3

Perc 5
Cro

SC 2

Perc. 6
Glock

M-Sop.

Where are

Pno.

C

Musical score for Percussion, M-Sop, and Pno. starting at measure 47. The score includes staves for Perc 1 Mar, Perc 2 Wch Flex TT1, Perc 3 Tri, Perc 4 Xylo, Mara TT2, Perc 5 Vib, SC 1 & 3, Perc 6 Cro, SC 2, Perc. 6 Glock, M-Sop, and Pno. The M-Sop part includes lyrics: "you?", "MIR.", "Ah, ah,". The Pno. part features a complex melodic line in the right hand and a supporting bass line in the left hand.

52

Perc 1
Mar

Perc 2
Wch
Flex
TT1

Tri

Perc 3
Xylo

Mara
TT2

Perc 4
Vib

SC 1
& 3

Perc 5
Cro

SC 2

Perc. 6
Glock

M-Sop.

Pno.

p *l.v*

motor on

p
Red.

mf *mp* *p*

portamento

ah, _____ ah, — ah, ah, _____

White note cluster play
with palm of hand

mp

15^{ma}

Red.

*

*

D

59

Perc 1
Mar

Perc 2
Wch
Flex
TT1

Tri

Perc 3
Xylo

Mara
TT2

Perc 4
Vib

SC 1
& 3

Perc 5
Cro

SC 2

Perc. 6
Glock

M-Sop.

Pno.

p *l.v* *mp* *l.v* *mp* *l.v*

ped. *

CAL. MIR. *p*

Don't _____ be scared. Ah, ah,

p *mp*

66

Perc 1
Mar

66

Perc 2
Wch
Flex
TT1

66

Tri

Perc 3

Xylo

66

Mara
TT2

Perc 4

Vib

66

SC 1
& 3

Perc 5

Cro

66

SC 2

Perc. 6

Glock

66

M-Sop.

mp *mf* *f*

ah, ——— ah, ah. Oh, oh,h oh, oh, ah, oh.

portamento

66

Pno.

mf *f*

8va-1 loc. cit.

E

72

Perc 1
Mar

72

Perc 2
Wch
Flex
TT1

72

Perc 3
Tri

Xylo

72

Mara
TT2

72

Perc 4
Vib

72

SC 1
& 3

Perc 5
Cro

72

SC 2

Perc. 6
Glock

72

M-Sop.

CAL. *mf* *ff* *f*

hiss

This is - land is full of noi - ses, strange

72

Pno.

Detailed description: This is a page of a musical score for percussion and vocal parts, measures 72-77. The score is arranged in a vertical stack of staves. At the top, a box contains the letter 'E'. The percussion parts include: Perc 1 (Maracas) with a melodic line starting at measure 75; Perc 2 (Wch, Flex, TT1); Perc 3 (Tri); Perc 4 (Vib); Perc 5 (Cro); Perc 6 (Glock). The vocal part (M-Sop.) has lyrics: 'This is - land is full of noi - ses, strange'. The vocal line includes dynamic markings: CAL. *mf*, *ff* *hiss*, and *f*. The piano part (Pno.) is at the bottom, starting with a key signature change to B-flat major at measure 72.

78

Perc 1
Mar

78

Perc 2
Wch
Flex
TT1

78

Tri

Perc 3
Xylo

78

Mara
TT2

Perc 4
Vib

78

SC 1
& 3

Perc 5
Cro

78

SC 2

Perc. 6
Glock

78

M-Sop.

78

Pno.

ff

f

f *l.v.* *f*

Flexatone

gliss.

ff

f

ff

ff

hiss

sounds

84

Perc 1
Mar

Perc 2
Wch
Flex
TT1

Tri

Perc 3
Xylo

Mara
TT2

Perc 4
Vib

SC 1
& 3

Perc 5
Cro

SC 2

Perc. 6
Glock

M-Sop.

Pno.

f

ff

gliss.

gliss.

ff

Suspended Cymbal

f

ff *l.v.*

Suspended Cymbal

f

ff *l.v.*

White note cluster play
with forearm
ff

15^{ma}
∞
∞

Detailed description: This page of a musical score covers measures 84 to 89. It features multiple staves for percussion instruments and a piano. Percussion parts include Maracas (Perc 1), Whistle/Flexa/Tambourine 1 (Perc 2), Triangle (Perc 3), Xylophone (Perc 3), Maracas/Tambourine 2 (Mara TT2), Vibraphone (Perc 4), Suspended Cymbal (SC 1 & 3), Crotales (Perc 5), Suspended Cymbal (SC 2), and Glockenspiel (Perc. 6). The piano part (Pno.) is in the bottom system. Measure 84 shows the start of the percussion patterns. Measure 85 has a dynamic marking of *f* for Perc 2. Measure 86 has a dynamic marking of *ff* for Perc 3. Measure 87 has dynamic markings of *f* and *ff* for SC 1 & 3 and Perc 5 respectively, with *l.v.* (lento) markings. Measure 88 has dynamic markings of *f* and *ff* for SC 2 and Perc. 6 respectively, with *l.v.* markings. Measure 89 features a white note cluster in the piano part, with a dynamic marking of *ff* and a 15-measure fermata. The score includes various musical notations such as slurs, accents, and dynamic markings.

90 F

Perc 1
Mar

Perc 2
Wch
Flex
TT1

Tri

Perc 3
Xylo

Mara
TT2

Perc 4
Vib

SC 1
& 3

Perc 5
Cro

SC 2

Perc. 6
Glock

M-Sop.

Pno.

(15^{ma})

*
loc.cit.

96
Perc 1 Mar *mf*

96 *p* *mf*

Perc 2 Wch Flex TT1

96

Perc 3 Tri

Xylo *p* *mf*

96

Mara TT2

Perc 4 Vib

96

SC 1 & 3

Perc 5 Cro

96

SC 2

Perc. 6 Glock

96 CAL. *p* *mf*

M-Sop. and sweet mel - o - dies

96

Pno.

102

Perc 1
Mar

102 *p*

Perc 2
Wch
Flex
TT1

102

Tri

Perc 3

Xylo

102 *p*

Mara
TT2

Perc 4
Vib

102

SC 1
& 3

Perc 5
Cro

102

SC 2

Perc. 6
Glock

102 *p*

M-Sop.

mf

sweet. — sweet, sweet

102 *p* *mf*

Pno.

p *mf*

p

Detailed description: This is a page of a musical score, page 21, starting at measure 102. The score is arranged in a vertical stack of staves. The percussion section includes Maracas (Perc 1), Woodblock/Flexible Tom-tom 1 (Perc 2), Triangle (Perc 3), Xylophone (Perc 3), Maraca/Tom-tom 2 (Perc 4), Vibraphone (Perc 4), Snare Drum 1 & 3 (Perc 5), Crotales (Perc 5), Snare Drum 2 (Perc. 6), and Glockenspiel (Perc. 6). The vocal part features two M-Sopranos (M-Sop.) with lyrics 'sweet. — sweet, sweet' starting in measure 102. The piano part (Pno.) has a melody in the right hand and a bass line in the left hand, with dynamics *p* and *mf* indicated. The key signature has one flat (B-flat), and the time signature is 4/4. The score is written in a clean, professional style with clear notation for notes, rests, and dynamics.

107

Perc 1
Mar

107

Perc 2
Wch
Flex
TT1

107

Tri

Perc 3

Xylo

107

Mara
TT2

Perc 4

Vib

107

SC 1
& 3

Perc 5

Cro

107

SC 2

Perc. 6

Glock

107

M-Sop.

mel - o - dies

107

Pno.

///

Perc 1
Mar

///

Perc 2
Wch
Flex
TT1

///

Perc 3
Tri
Xylo

///

Perc 4
Mara
TT2
Vib

///

Perc 5
SC 1
& 3
Cro

///

Perc. 6
SC 2
Glock

///

M-Sop.
that make you feel good, so _____

///

Pno.

G

116

Perc 1
Mar

116

Perc 2
Wch
Flex
TT1

116

Perc 3
Tri

Xylo

116

Mara
TT2

116

Perc 4
Vib

motor on

mf < *f*

SC 1
& 3

Perc 5
Cro

116

SC 2

Perc. 6
Glock

116

M-Sop.

f good.. ——— *mf* MIR. *f* O, won-der! O won der! O

116

Pno.

f

121

Perc 1
Mar

121

Perc 2
Wch
Flex
TT1

121

Perc 3
Tri

Xylo

121

Mara
TT2

121

Perc 4
Vib

mf *f*

SC 1
& 3

Perc 5
Cro

121

SC 2

Perc. 6
Glock

121

M-Sop.

won - der! ah ah, ah ah,

121

Pno.

Detailed description of the musical score: The score is for measures 121-125. It features a variety of percussion instruments: Maracas (Perc 1), Whistle, Flexatone, and Tom-tom 1 (Perc 2), Triangle (Perc 3), Xylophone (Perc 3), Maracas and Tom-tom 2 (Mara TT2), Vibraphone (Perc 4), Conga (Perc 5), and Glockenspiel (Perc. 6). The Vibraphone and Soprano parts have melodic lines with dynamics *mf* and *f*. The Soprano part includes the lyrics 'won - der! ah ah, ah ah,'. The Piano part is currently blank.

126

Perc 1
Mar

126

Perc 2
Wch
Flex
TT1

126

Perc 3
Tri

Xylo

126

Mara
TT2

126

Perc 4
Vib

126

SC 1
& 3

Perc 5
Cro

126

SC 2

Perc. 6
Glock

126

M-Sop.

ah, ah, ah, ah, sweet

126

Pno.

mf

Detailed description: This is a page of a musical score, page 26, starting at measure 126. It features ten staves. Percussion staves (Perc 1-6) are mostly empty, with small black squares indicating hits. Perc 4 (Vib) has a complex rhythmic pattern of eighth and sixteenth notes. M-Sop. has vocal lines with lyrics 'ah, ah, ah, ah, sweet' and a dynamic marking of *mf*. Pno. is empty.

H

131

Perc 1
Mar

131

Perc 2
Wch
Flex
TT1

131

Perc 3
Tri

Xylo

131

Mara
TT2

Perc 4
Vib

131

SC 1
& 3

Perc 5
Cro

131

SC 2

Perc. 6
Glock

131

M-Sop.
mel - o - dies.

131

Pno.
mf *f*

136

Perc 1
Mar

Perc 2
Wch
Flex
TT1

Perc 3
Tri

Xylo

Mara
TT2

Perc 4
Vib

SC 1
& 3

Perc 5
Cro

SC 2

Perc. 6
Glock

M-Sop.

Pno.

p

Tam Tam

pp *lv*

CAL. *p*

Di - vers ins - tru - ments of

mf

Detailed description: This page of a musical score covers measures 136 to 140. It features multiple staves for percussion instruments: Maracas (Perc 1), Whistle/Flexa/Tam-tam 1 (Perc 2), Triangle (Perc 3), Xylophone (Perc 4), Mara/Tam-tam 2 (Perc 5), Vibraphone (Perc 6), Conga (Perc 7), and Glockenspiel (Perc 8). The vocal line (M-Sop.) begins in measure 138 with the instruction 'CAL.' and a dynamic of *p*, singing the words 'Di - vers ins - tru - ments of'. The piano accompaniment (Pno.) starts in measure 136 with a dynamic of *mf*. The score includes various musical notations such as rests, notes, slurs, and dynamic markings.

141

Perc 1
Mar

141 *mf* *p*

Perc 2
Wch
Flex
TT1

141

Perc 3
Tri

Xylo

141

Mara
TT2

Perc 4
Vib

pp *l.v*

SC 1
& 3

Perc 5
Cro

141

SC 2

Perc. 6
Glock

141 *mf* *p* *mp*

M-Sop.
mu - ic, of mu - sic like - wise to you un - known, some

141

Pno.

147

Perc 1
Mar

147 *mp* *mf*

Perc 2
Wch
Flex
TT1

147

Perc 3
Tri

Xylo

147

Mara
TT2

Perc 4
Vib

147

SC 1
& 3

Perc 5
Cro

147

SC 2

Perc. 6
Glock

147

M-Sop.
swee - ter than an - y you have,

147

Pno.

Detailed description: This page of a musical score covers measures 147 to 151. The top staff, Perc 1 Maracas, features a melodic line with a dynamic range from mezzo-piano (mp) to mezzo-forte (mf). The rest of the percussion section (Perc 2-6) and the piano accompaniment (Pno.) are currently silent, indicated by rests on their respective staves. The M-Sopranos part includes the lyrics 'swee - ter than an - y you have,'.

I

Perc 1
Mar

Perc 2
Wch
Flex
TT1

Perc 3
Xylo

Perc 4
Mara
TT2
Vib

Perc 5
SC 1
& 3
Cro

Perc. 6
SC 2
Glock

M-Sop.

Pno.

152

mf

l.v

motor off

mf *f* *mf*

MIR. *mf* *f* *mf*

portamento

O won-der! O won-der, won-der!

159

Perc 1
Mar

159

Perc 2
Wch
Flex
TT1

159

Perc 3
Tri

159

Xylo

159

Mara
TT2

159

Perc 4
Vib

159

SC 1
& 3

Perc 5
Cro

159

SC 2

Perc. 6
Glock

159

M-Sop.

O, won-derl

159

Pno.

Detailed description of the musical score: The score is for measures 159 to 164. Percussion 1 (Maracas) has a melodic line starting in measure 160. Percussion 2 (Wah, Flex, TT1) has a sustained note in measure 160. Percussion 3 (Triangle) is silent. Percussion 4 (Vibraphone) has a melodic line starting in measure 160. Percussion 5 (Cymbals) and Percussion 6 (Glockenspiel) are silent. The Piano part is silent. The vocal part (M-Sop.) has the lyrics 'O, won-derl' starting in measure 160. Dynamics include piano (p) and piano/ritardando (p, l.v.).

165

Perc 1
Mar

mp *mf*

Perc 2
Wch
Flex
TT1

165

Perc 3
Tri

Xylo

mp *mf*

Mara
TT2

Perc 4
Vib

165

SC 1
& 3

Perc 5
Cro

165

SC 2

Perc. 6
Glock

165

M-Sop.

CAL. *mp* *mf*

to - ge - ther with bells and rings that are dain-ty and

165

Pno.

J

171

Perc 1
Mar

171

Perc 2
Wch
Flex
TT1

171

Perc 3
Tri

Xylo

171

Mara
TT2

Perc 4
Vib

motor off

mf *l.v* *f* *mf*

SC 1
& 3

Perc 5
Cro

171

SC 2

Perc. 6
Glock

171

M-Sop.

sweet. _____

MIR. _____

O, _____

won - der!

f *mf*

171

Pno.

177

Perc 1
Mar

Perc 2
Wch
Flex
TT1

177

mf *lv*

mp *lv*
Triangle

Perc 3
Tri

mp
p

Xylo

Mara
TT2

Perc 4
Vib

177

p

SC 1
& 3

Perc 5
Cro

177

p

SC 2

Perc. 6
Glock

M-Sop.

177

Pno.

White note cluster play
with forearm

mp
leo.

*

K

183

Perc 1
Mar

183

Perc 2
Wch
Flex
TT1

183

Perc 3
Tri

Xylo

183

Mara
TT2

Perc 4
Vib

183

SC 1
& 3

Perc 5
Cro

183

SC 2

Perc. 6
Glock

183

M-Sop.

183

Pno.

White note cluster play
with forearm
p

p *mf*

lv *lv*

Teo. *

189

Perc 1
Mar

189

Perc 2
Wch
Flex
TT1

189

Tri

Perc 3

Xylo

189

Mara
TT2

Perc 4
Vib

189

SC 1
& 3

Perc 5
Cro

189

SC 2

Perc. 6
Glock

189

M-Sop.

CAL. *mf*

we make di - vers trem - blings and war -

189

Pno.

195

Perc 1
Mar

Perc 2
Wch
Flex
TT1

Perc 3
Tri
Xylo

Mara
TT2

Perc 4
Vib

SC 1
& 3
Perc 5
Cro

SC 2
Perc. 6
Glock

M-Sop.

Pno.

mf

motor off

mf

mf

lings.....

201 **L**

Perc 1
Mar

201 *f*

Perc 2
Wch
Flex
TT1

201 *p*

Perc 3
Tri

201 *f* *p*

Perc 4
Vib

201 *f* *p*

Perc 5
Cro

201 *f* *mf* *p*

Perc. 6
Glock

201 *mf*

M-Sop.
Ah, ah, ah, ah, ah, ah,

201

Pno.

206

Perc 1
Mar

Perc 2
Wch
Flex
TT1

Tri

Perc 3
Xylo

Mara
TT2

Perc 4
Vib

SC 1
& 3

Perc 5
Cro

SC 2

Perc. 6
Glock

M-Sop.

Pno.

mf *l.v.*

mf

mf

mf

mp *fr*

mf *fr*

ah, ah, ah, ah, ah, ah, ah, ah, ah, ah, ah. O, won - der!

212

Perc 1
Mar

212

Perc 2
Wch
Flex
TT1

212

Perc 3
Tri
Xylo

212

Mara
TT2

212

Perc 4
Vib

212

SC 1
& 3
Perc 5
Cro

212

SC 2
Perc. 6
Glock

212

M-Sop.

How man-y good-ly crea - tures are there here! O brave new world...

212

Pno.

218

Perc 1
Mar

218

Perc 2
Wch
Flex
TT1

218

Tri

Perc 3

Xylo

218

Mara
TT2

Perc 4
Vib

218

SC 1
& 3

Perc 5
Cro

218

SC 2

Perc. 6

Glock

218

M-Sop.

How beau - te - - ous man - kind is!

218

Pno.

M

Musical score for Percussion and Piano. The score is divided into two systems. The first system includes Perc 1 Mar, Perc 2 Wch Flex TT1, Perc 3 Tri, Perc 4 Xylo, Perc 5 Mara TT2, Perc 6 Vib, Perc 7 SC 1 & 3, Perc 8 Cro, Perc 9 SC 2, Perc 10 Glock, and M-Sop. The second system includes Pno. The score features various percussion parts with rests and specific dynamics like *p* and *mf*. The piano part includes a melodic line with triplets and a bass line with triplets. The tempo is marked 224.

230

Perc 1
Mar

230

Perc 2
Wch
Flex
TT1

230

Tri

Perc 3

Xylo

230

Mara
TT2

Perc 4
Vib

230

SC 1
& 3

Perc 5
Cro

230

SC 2

Perc. 6

Glock

230

M-Sop.

230

Pno.

N

236

Perc 1
Mar

Perc 2
Wch
Flex
TT1

Perc 3
Tri

Xylo

Mara
TT2

Perc 4
Vib

SC 1
& 3

Perc 5
Cro

SC 2

Perc. 6
Glock

M-Sop.

Pno.

una corda

motor on

p

p

We are such

243

Perc 1
Mar

243

Perc 2
Wch
Flex
TT1

243

Perc 3
Tri
Xylo

243

Mara
TT2

243

Perc 4
Vib

243

SC 1
& 3

Perc 5
Cro

243

SC 2

Perc. 6
Glock

243

M-Sop.

stuff as dreams _____ are made on;

243

Pno.

Detailed description of the musical score: The score is for measures 243 to 249. It features several percussion parts: Perc 1 (Maracas), Perc 2 (Whistle, Flexatone, TT1), Perc 3 (Triangle, Xylophone), Perc 4 (Vibraphone), Perc 5 (Crotales), and Perc 6 (Glockenspiel). The M-Soprano part has lyrics 'stuff as dreams _____ are made on;'. The Piano part is a grand staff with rests. Dynamics include *mf* and *p*. There are also hairpins and accents in the Perc 4 and Perc 6 parts.

O

250

Perc 1
Mar

250

Perc 2
Wch
Flex
TT1

250

Tri

Perc 3

Xylo

250

Mara
TT2

250

Perc 4
Vib

250

SC 1
& 3

Perc 5
Cro

250

SC 2

Perc. 6

Glock

250

M-Sop.

and our litt - le

250

Pno.

257

Perc 1
Mar

257

Perc 2
Wch
Flex
TT1

257

Tri

Perc 3

Xylo

257

Mara
TT2

Perc 4
Vib

257

SC 1
& 3

Perc 5
Cro

257

SC 2

Perc. 6
Glock

257

M-Sop.

life is roun-ded with a sleep.

257

Pno.

264

Perc 1
Mar

Perc 2
Wch
Flex
TT1

264

mp *l.v.*

264

Tri

Perc 3

Xylo

264

Mara
TT2

Perc 4
Vib

264

p

3

3

pp *l.v.*

SC 1
& 3

Perc 5
Cro

264

SC 2

Perc. 6
Glock

264

p

3

3

p

pp

M-Sop.

264

a sleep.

Pno.

264

p

pp

p

3

3